

With Freon (R-22) Refrigerant
FLAMINGO KUHLER SERIES WATER COOLED SCREW CHILLERS WITH HANBELL SEMI-HERMETIC SCREW COMPRESSORS

Description	Units	KUHLER			
		CWCR-01-HB	CWCR-02-HB	CWCR-03-HB	CWCR-04-HB
Unit Model					
Nominal Cooling Capacity					
At Evap / Cond temp: -20 / 40 deg. C & Power Input**(KW)	TR/KW	11.86TR / 20.6KW	16.52TR / 27.8KW	24.15TR / 38.7KW	32.31TR / 51.3KW
At Evap / Cond temp: -15 / 40 deg. C & Power Input**(KW)	TR/KW	14.73TR / 21.4KW	20.48TR / 28.8KW	29.27TR / 40.1KW	39.17TR / 53.1KW
At Evap / Cond temp: -10 / 40 deg. C & Power Input**(KW)	TR/KW	17.72TR / 22.1KW	24.63TR / 29.8KW	35.22TR / 41.4KW	47.11TR / 54.9KW
At Evap / Cond temp: -05 / 40 deg. C & Power Input**(KW)	TR/KW	21.03TR / 22.7KW	29.30TR / 30.6KW	41.87TR / 42.6KW	56.04TR / 56.4KW
At Evap / Cond temp: 0 / 40 deg. C & Power Input**(KW)	TR/KW	24.83TR / 23.1KW	34.56TR / 31.2KW	49.35TR / 43.3KW	66.05TR / 57.4KW
At Evap / Cond temp: 05 / 40 deg. C & Power Input**(KW)	TR/KW	27.42TR / 22.6KW	38.15TR / 30.5KW	54.53TR / 42.3KW	72.95TR / 56.1KW
At Evap / Cond temp: 10 / 40 deg. C & Power Input**(KW)	TR/KW	32.66TR / 23.0KW	45.4TR / 31.1KW	64.95TR / 43.2KW	86.88TR / 57.3KW
COMPRESSOR					
Compressor Type		Semi-Hermatic Screw			
Compressor Model		RC2-100B	RC2-140B	RC2-200B	RC2-260B
Compressor Qty	Nos.	1	1	1	1
Compressor Make		Hanbell Precise Machinery (Made in Taiwan)			
Unit capacity reduction steps in %		33,66,100	33,66,100	25,50,75,100	25,50,75,100
Oil Type		HBR-B10	HBR-B10	HBR-B10	HBR-B10
Oil Charge / Compr (Ltr.)	Ltrs	7L*	7L*	8L*	14L*
Sound Level at 1mtr Distance	dB (A)	73.1	73.7	78.4	79.2
Power Supply		380-420 V/3 Ph, 50Hz, AC			
Nominal HP	HP	31	41	58	75
EVAPORATOR					
Evaporator Type		Shell & Tube Direct Expansion Type With Mechanically Bonded Aluminium Star Turbulators Inserts for providing turbulence to the refrigerant			
Evaporator Model		FMT-33TR	FMT-46TR	FMT-65TR	FMT-87TR
Evaporator Qty	Nos.	1	1	1	1
No. Of Pass (Refrigerant Side)	Nos.	2	2	2	2
Tube Details	mm	12.7	12.7	12.7	12.7
Water Connection Size In/Out	Inch	2.5" NB***	2.5" NB***	3" NB***	3" NB***
Water/Brine Flow Rate (Min)	LPM	150	200	280	350
Water/Brine Flow Rate (Max)	LPM	330	460	650	870
CONDENSER					
Condenser Type		Shell & Tube Type Condenser With Outer Finned Copper Tubes Having 26Fins Per Inch			
Condenser Model		FMT-35TR	FMT-50TR	FMT-70TR	FMT-90TR
Condenser Qty	Nos.	1	1	1	1
No. Of Pass (Water Side)	Nos.	2	2	2	2
Tube Details	mm	19.05	19.05	19.05	19.05
Water Connection Size In/Out	Inch	2.5" NB***	2.5" NB***	3" NB***	3" NB***
Water Flow Rate	LPM	460	650	935	1250
Cooling Tower Water In Temp (Max.)	Deg .C	32	32	32	32
Cooling Tower Water Out Temp (Max.)	Deg .C	35.5	35.5	35.5	35.5
EXTERNAL OIL COOLER FOR BELOW -10 DEG.C APPLICATION					
Type		Air Cooled	Air Cooled	Air Cooled	Air Cooled
Capacity	kW	2.21	2.69	3.47	4.44
No. of Fans	Nos.	1	1	1	1
Fan Ø	mm	450	450	450	500
Power	W	250	250	250	450
Airflow	CFM	3061	3061	3061	4591
ECONOMISER FOR BELOW 5.0 DEG.C EVAPORATING TEMPERATURE					
Type		Shell & Tube Dx type			
Capacity	kW	8.69	12.09	17.27	23.1
CONTROL PANEL					
Starter Type		Star-Delta starter panel with optional choice of soft starter			
Microprocessor		PLC with optional choice of MCS Controls(USA) make microprocessor based control panel with step-less capacity control			
Make		Schneider			
UNIT DIMENSION & WEIGHTS					
Length	mm	2760	2760	2760	3050
Width	mm	1310	1310	1400	1400
Height	mm	1700	1700	1800	1950
Refrigerant charge qty	Kg	25	32	42	50
Net Weight	Kg	680	700	775	850
Detailed Dimensions & GA Drawing On Following Pages		10	10	10	10

Rating Conditions:-

- 1).Condenser tube side fouling Factor= 0.000043 m2K/W
- 2).Evaporator shell side fouling factor= 0.000043 m2.k/W
- 3).**Power Input shown does not include oil cooler axial fan power input
- 4).Specifications are subject to change due to continuous product development.
- 5).*Oil charge to increase in case oil cooler used.
- 6).Economiser applied to all models below 5.0 deg. C Evap. Temp.
- 7).***Condenser water in & out and Evaporator water/brine in & out connection size indicated above is calculated based on chiller maximum capacity and this may vary according to the outlet temperature at which the chiller is to be designed. For final sizing please refer to the company at time of order placement.

With Freon (R-22) Refrigerant
FLAMINGO KUHLER SERIES WATER COOLED SCREW CHILLERS WITH HANBELL SEMI-HERMETIC SCREW COMPRESSORS

Description	Units	KUHLER CWCR-05-HB	KUHLER CWCR-06-HB	KUHLER CWCR-07-HB	KUHLER CWCR-08-HB
Unit Model					
Nominal Cooling Capacity					
At Evap / Cond temp: -20 / 40 deg. C & Power Input**(KW)	TR/KW	38.03TR / 57.7KW	44.03TR / 66.2KW	47.68TR / 71.5KW	52.5TR / 81.1KW
At Evap / Cond temp: -15 / 40 deg. C & Power Input**(KW)	TR/KW	46.14TR / 59.8KW	53.34TR / 68.6KW	57.75TR / 74.1KW	63.58TR / 84.0KW
At Evap / Cond temp: -10 / 40 deg. C & Power Input**(KW)	TR/KW	55.50TR / 61.8KW	64.18TR / 70.9KW	69.44TR / 76.5KW	76.47TR / 86.8KW
At Evap / Cond temp: -05 / 40 deg. C & Power Input**(KW)	TR/KW	66.03TR / 63.5KW	76.33TR / 72.8KW	82.61TR / 78.7 KW	90.95TR / 89.3KW
At Evap / Cond temp: 0 / 40 deg. C & Power Input**(KW)	TR/KW	77.80TR / 64.7KW	89.95TR / 74.2KW	97.38TR / 80.1KW	107.22TR / 90.9KW
At Evap / Cond temp: 05 / 40 deg. C & Power Input**(KW)	TR/KW	85.94TR / 63.2KW	99.31TR / 72.5KW	107.53TR / 78.3KW	118.40TR / 88.8KW
At Evap / Cond temp: 10 / 40 deg. C & Power Input**(KW)	TR/KW	102.33TR / 64.6KW	118.31TR / 74.0KW	128.10TR / 79.9KW	141.01TR / 90.7KW
COMPRESSOR					
Compressor Type		Semi-Hermatic Screw			
Compressor Model		RC2-300B	RC2-340B	RC2-370B	RC2-410B
Compressor Qty	Nos.	1	1	1	1
Compressor Make		Hanbell Precise Machinery (Made in Taiwan)			
Unit capacity reduction steps in %		25,50,75,100	35,50,75,100	35,50,75,100	25,50,75,100
Oil Type		HBR-B10	HBR-B10	HBR-B10	HBR-B10
Oil Charge / Compr (Ltr.)	Ltrs	16L*	16L*	16L*	15L*
Sound Level at 1mtr Distance	dB (A)	79.6	80.4	81.5	83.1
Power Supply		380-420 V/3 Ph, 50Hz, AC			
Nominal HP	HP	89	101	108	121
EVAPORATOR					
Evaporator Type		Shell & Tube Direct Expansion Type With Mechanically Bonded Aluminium Star Turbulators Inserts for providing turbulence to the refrigerant			
Evaporator Model		FMT-103TR	FMT-119TR	FMT-129TR	FMT-142TR
Evaporator Qty	Nos.	1	1	1	1
No. Of Pass (Refrigerant Side)	Nos.	2	2	4	4
Tube Details	mm	12.7	12.7	19	19
Water Connection Size In/Out	Inch	4" NB***	4" NB***	4" NB***	4" NB***
Water/Brine Flow Rate (Min)	LPM	400	500	500	550
Water/Brine Flow Rate (Max)	LPM	1050	1200	1300	1450
CONDENSER					
Condenser Type		Shell & Tube Type Condenser With Outer Finned Copper Tubes Having 26Fins Per Inch			
Condenser Model		FMT-110TR	FMT-125TR	FMT-135TR	FMT-150TR
Condenser Qty	Nos.	1	1	1	1
No. Of Pass (Water Side)	Nos.	2	2	4	4
Tube Details	mm	19.05	19.05	19.05	19.05
Water Connection Size In/Out	Inch	4" NB***	4" NB***	4" NB***	5" NB***
Water Flow Rate	LPM	1470	1700	1840	2028
Cooling Tower Water In Temp (Max.)	Deg .C	32	32	32	32
Cooling Tower Water Out Temp (Max.)	Deg .C	35.5	35.5	35.5	35.5
EXTERNAL OIL COOLER FOR BELOW -10 DEG.C APPLICATION					
Type		Air Cooled	Air Cooled	Air Cooled	Air Cooled
Capacity	kW	3.96	4.37	4.65	6.21
No. of Fans	Nos.	1	1	1	1
Fan Ø	mm	500	500	500	500
Power	W	450	450	450	450
Airflow	CFM	4591	4591	4591	4591
ECONOMISER FOR BELOW 5.0 DEG.C EVAPORATING TEMPERATURE					
Type		Shell & Tube Dx type			
Capacity	kW	27.22	31.47	34.06	37.5
CONTROL PANEL					
Starter Type		Star-Delta starter panel with optional choice of soft starter			
Microprocessor		PLC with optional choice of MCS Controls(USA) make microprocessor based control panel with step-less capacity control			
Make		Schneider			
UNIT DIMENSION & WEIGHTS					
Length	mm	3050	3050	3840	3840
Width	mm	1460	1460	1470	1470
Height	mm	2050	2050	2180	2180
Refrigerant charge qty	Kg	44	48	56	65
Net Weight	Kg	950	1050	2120	2200
Detailed Dimensions & GA Drawing On Following Pages		10	10	10	10

Rating Conditions:-

- 1).Condenser tube side fouling Factor= 0.000043 m2K/W
- 2).Evaporator shell side fouling factor= 0.000043 m2.K/W
- 3).**Power Input shown does not include oil cooler axial fan power input
- 4).Specifications are subject to change due to continuous product development.
- 5).*Oil charge to increase in case oil cooler used.
- 6).Economiser applied to all models below 5.0 deg. C Evap. Temp.
- 7).**Condenser water in & out and Evaporator water/brine in & out connection size indicated above is calculated based on chiller maximum capacity and this may vary according to the outlet temperature at which the chiller is to be designed. For final sizing please refer to the company at time of order placement.

With Freon (R-22) Refrigerant
FLAMINGO KUHLEK SERIES WATER COOLED SCREW CHILLERS WITH HANBELL SEMI-HERMETIC SCREW COMPRESSORS

Description	Units	KUHLER	KUHLER	KUHLER	KUHLER	KUHLER
		CWCR-09-2HB	CWCR-10-2HB	CWCR-11-2HB	CWCR-12-2HB	CWCR-13-2HB
Unit Model						
Nominal Cooling Capacity						
At Evap / Cond temp: -20 / 40 deg. C & Power Input**(KW)	TR/KW	64.62TR / 102.6KW	76.06TR / 115.4KW	88.06TR / 132.4KW	95.36TR / 143KW	105TR / 162.2KW
At Evap / Cond temp: -15 / 40 deg. C & Power Input**(KW)	TR/KW	78.34TR / 106.2KW	92.28TR / 119.6KW	106.68TR / 137.2KW	115.5TR / 148.2KW	127.16TR / 168KW
At Evap / Cond temp: -10 / 40 deg. C & Power Input**(KW)	TR/KW	94.22TR / 109.8KW	111TR / 1230.6KW	128.36TR / 141.8KW	138.88TR / 153KW	152.8TR / 173.6KW
At Evap / Cond temp: -05 / 40 deg. C & Power Input**(KW)	TR/KW	112.08TR / 112.8KW	132.06TR / 127KW	152.66TR / 145.6KW	165.22TR / 157.4KW	181.9TR / 178.6KW
At Evap / Cond temp: 0 / 40 deg. C & Power Input**(KW)	TR/KW	132.1TR / 114.8KW	155.6TR / 129.4KW	179.9TR / 148.4KW	194.76TR / 160.2KW	214.44TR / 181.8KW
At Evap / Cond temp: 05 / 40 deg. C & Power Input**(KW)	TR/KW	145.9TR / 112.2KW	171.88TR / 126.4KW	198.62TR / 145KW	215.06TR / 156.6KW	236.8TR / 177.6KW
At Evap / Cond temp: 10 / 40 deg. C & Power Input**(KW)	TR/KW	173.76TR / 114.6KW	204.66TR / 129.2KW	236.62TR / 148KW	256.2TR / 159.8KW	282.02TR / 181.4KW
COMPRESSOR						
Compressor Type		Semi-Hermatic Screw				
Compressor Model		RC2-260B	RC2-300B	RC2-340B	RC2-370B	RC2-410B
Compressor Qty	Nos.	2	2	2	2	2
Compressor Make		Hanbell Precise Machinery (Made in Taiwan)				
Unit capacity reduction steps in %		25,50,75,100	25,50,75,100	35,50,75,100	35,50,75,100	25,50,75,100
Oil Type		HBR-B10	HBR-B10	HBR-B10	HBR-B10	HBR-B10
Oil Charge / Compr (Ltr.)	Ltrs	14L* X 2	16L* X 2	16L* X 2	16L* X 2	15L* X 2
Sound Level at 1mtr Distance	dB (A)	79.2	79.6	80.4	81.5	83.1
Power Supply		380-420 V/3 Ph, 50Hz, AC				
Nominal HP	HP	75 X 2	89 X 2	101 X 2	108 X 2	121 X 2
EVAPORATOR						
Evaporator Type		Shell & Tube Direct Expansion Type With Mechanically Bonded Aluminium Star Turbulators Inserts for providing turbulence to the refrigerant				
Evaporator Model		FMT-174TR	FMT-205TR	FMT-237TR	FMT-257TR	FMT-283TR
Evaporator Qty	Nos.	1	1	1	1	1
No. Of Pass (Refrigerant Side)	Nos.	1	1	1	1	1
Tube Details	mm	19	19	19	19	19
Water Connection Size In/Out	Inch	4" NB***	5" NB***	5" NB***	5" NB***	6" NB***
Water/Brine Flow Rate (Min)	LPM	700	800	900	980	1100
Water/Brine Flow Rate (Max)	LPM	1800	2100	2400	2600	2900
CONDENSER						
Condenser Type		Shell & Tube Type Condenser With Outer Finned Copper Tubes Having 26Fins Per Inch				
Condenser Model		FMT-90TR X 2	FMT-110TR X 2	FMT-125TR X 2	FMT-135TR X 2	FMT-150TR X 2
Condenser Qty	Nos.	2	2	2	2	2
No. Of Pass (Water Side)	Nos.	2	2	2	4	4
Tube Details	mm	19.05	19.05	19.05	19.05	19.05
Water Connection Size In/Out	Inch	3" NB***	4" NB***	4" NB***	4" NB***	5" NB***
Water Flow Rate	LPM	1250 X 2	1470 X 2	1700 X 2	1840 X 2	2028 X 2
Cooling Tower Water In Temp (Max.)	Deg. C	32	32	32	32	32
Cooling Tower Water Out Temp (Max.)	Deg. C	35.5	35.5	35.5	35.5	35.5
EXTERNAL OIL COOLER FOR BELOW -10 DEG.C APPLICATION						
Type		Air Cooled	Air Cooled	Air Cooled	Air Cooled	Air Cooled
Capacity	kW	4.44 X 2	3.96 X 2	4.37 X 2	4.65 X 2	6.21 X 2
No. of Fans	Nos.	1	1	1	1	1
Fan Ø	mm	500 X 2	500 X 2	500 X 2	500 X 2	500 X 2
Power	W	450 X 2	450 X 2	450 X 2	450 X 2	450 X 2
Airflow	CFM	4591 x 2	4591 x 2	4591 x 2	4591 x 2	4591 x 2
ECONOMISER FOR BELOW 5.0 DEG.C EVAPORATING TEMPERATURE						
Type		Shell & Tube Dx type				
Capacity	kW	23.1 X 2	27.22 X 2	31.47 X 2	34.06 X 2	37.5 X 2
CONTROL PANEL						
Starter Type		Star-Delta starter panel with optional choice of soft starter				
Microprocessor		PLC with optional choice of MCS Controls(USA) make microprocessor based control panel with step-less capacity control				
Make		Schneider				
UNIT DIMENSION & WEIGHTS						
Length	mm	3822	3822	3822	4446	4446
Width	mm	1574	1674	1674	1974	1974
Height	mm	1900	2100	2100	2338	2438
Refrigerant charge qty	Kg	50 X 2	44 X 2	48 X 2	56 X 2	65 X 2
Net Weight	Kg	1500	1700	1800	3800	4200
Detailed Dimensions & GA Drawing On Following Pages		14	14	14	14	14

Rating Conditions:-

- 1).Condenser tube side fouling Factor= 0.000043 m2K/W
- 2).Evaporator shell side fouling factor= 0.000043 m2.K/W
- 3).**Power Input shown does not include oil cooler axial fan power input
- 4).Specifications are subject to change due to continuous product development.
- 5).*Oil charge to increase in case oil cooler used.
- 6).Economiser applied to all models below 5.0 deg. C Evap. Temp.
- 7).***Condenser water in & out and Evaporator water/brine in & out connection size indicated above is calculated based on chiller maximum capacity and this may vary according to the outlet temperature at which the chiller is to be designed. For final sizing please refer to the company at time of order placement.

With Freon (R-407C) Refrigerant
FLAMINGO KUHLER SERIES WATER COOLED SCREW CHILLERS WITH HANBELL SEMI-HERMETIC SCREW COMPRESSORS

Description	Units	KUHLER BWCR-01-HB	KUHLER BWCR-02-HB	KUHLER BWCR-03-HB	KUHLER BWCR-04-HB
Unit Model					
Nominal Cooling Capacity					
At Evap / Cond temp: -15 / 40 deg. C & Power Input**(KW)	TR/KW	13.39TR / 21.5KW	17.86TR / 28.2KW	25.91TR / 39.4KW	34.45TR / 52.3KW
At Evap / Cond temp: -10 / 40 deg. C & Power Input**(KW)	TR/KW	16.61TR / 22.0KW	22.16TR / 28.9KW	32.11TR / 40.4KW	42.70TR / 53.6KW
At Evap / Cond temp: -05 / 40 deg. C & Power Input**(KW)	TR/KW	20.14TR / 22.5KW	26.85TR / 29.5KW	38.94TR / 41.3KW	51.77TR / 54.7KW
At Evap / Cond temp: 0 / 40 deg. C & Power Input**(KW)	TR/KW	24.01TR / 22.9KW	32.03TR / 30.1KW	46.42TR / 42.1KW	61.73TR / 55.8KW
At Evap / Cond temp: 05 / 40 deg. C & Power Input**(KW)	TR/KW	27.45TR / 22.8KW	36.61TR / 30.0KW	53.08TR / 42.0KW	70.58TR / 55.7KW
At Evap / Cond temp: 10 / 40 deg. C & Power Input**(KW)	TR/KW	33.00TR / 24.0KW	44.01TR / 31.5KW	63.78TR / 44.0KW	84.80TR / 58.4KW
COMPRESSOR					
Compressor Type		Semi-Hermatic Screw			
Compressor Model		RC2-100B	RC2-140B	RC2-200B	RC2-260B
Compressor Qty	Nos.	1	1	1	1
Compressor Make		Hanbell Precise Machinery (Made in Taiwan)			
Unit capacity reduction steps in %		33,66,100	33,66,100	25,50,75,100	25,50,75,100
Oil Type		HBR-B05	HBR-B05	HBR-B05	HBR-B05
Oil Charge / Compr (Ltr.)	Ltrs	7L*	7L*	8L*	14L*
Sound Level at 1mtr Distance	dB (A)	73.1	73.7	78.4	79.2
Power Supply		380-420 V/3 Ph, 50Hz, AC			
Nominal HP	HP	31	41	58	75
EVAPORATOR					
Evaporator Type		Shell & Tube Direct Expansion Type With Mechanically Bonded Aluminium Star Turbulators Inserts for providing turbulence to the refrigerant			
Evaporator Model		FMT-33TR	FMT-46TR	FMT-65TR	FMT-87TR
Evaporator Qty	Nos.	1	1	1	1
No. Of Pass (Refrigerant Side)	Nos.	2	2	2	2
Tube Details	mm	12.7	12.7	12.7	12.7
Water Connection Size In/Out	Inch	2.5" NB***	2.5" NB***	3" NB***	3" NB***
Water/Brine Flow Rate (Min)	LPM	150	200	280	350
Water/Brine Flow Rate (Max)	LPM	330	460	650	870
CONDENSER					
Condenser Type		Shell & Tube Type Condenser With Outer Finned Copper Tubes Having 26Fins Per Inch			
Condenser Model		FMT-35TR	FMT-50TR	FMT-70TR	FMT-90TR
Condenser Qty	Nos.	1	1	1	1
No. Of Pass (Water Side)	Nos.	2	2	2	2
Tube Details	mm	19.05	19.05	19.05	19.05
Water Connection Size In/Out	Inch	2.5" NB***	2.5" NB***	3" NB***	3" NB***
Water Flow Rate	LPM	460	650	935	1250
Cooling Tower Water In Temp (Max.)	Deg. C	32	32	32	32
Cooling Tower Water Out Temp (Max.)	Deg. C	35.5	35.5	35.5	35.5
EXTERNAL OIL COOLER FOR BELOW ZERO DEG.C APPLICATION					
Type		Air Cooled	Air Cooled	Air Cooled	Air Cooled
Capacity	Kw	NA	NA	NA	NA
No. of Fans	Nos.	NA	NA	NA	NA
Fan Ø	mm	NA	NA	NA	NA
Power	W	NA	NA	NA	NA
AirFlow	CFM	NA	NA	NA	NA
ECONOMISER FOR BELOW 5.0 DEG.C EVAPORATING TEMPERATURE					
Type		Shell & Tube Dx type			
Capacity	KW	8.69	12.09	17.27	23.1
CONTROL PANEL					
Starter Type		Star-Delta starter panel with optional choice of soft starter			
Microprocessor		PLC with optional choice of MCS Controls(USA) make microprocessor based control panel with step-less capacity control			
Make		Schneider			
UNIT DIMENSION & WEIGHTS					
Length	mm	2760	2760	2760	3050
Width	mm	860	860	950	950
Height	mm	1700	1700	1800	1950
Refrigerant charge qty	Kg	25	32	42	50
Net Weight	Kg	680	700	775	850
Detailed Dimensions & GA Drawing On Following Pages		18	18	18	18

Rating Conditions:-

- 1).Condenser tube side fouling Factor= 0.000043 m2K/W
- 2).Evaporator shell side fouling factor= 0.000043 m2.K/W
- 3).**Power Input shown does not include oil cooler axial fan power input
- 4).Specifications are subject to change due to continuous product development.
- 5).*Oil charge to increase in case oil cooler used.
- 6).Economiser applied to all models below 5.0 deg. C Evap. Temp.
- 7).***Condenser water in & out and Evaporator water/brine in & out connection size indicated above is calculated based on chiller maximum capacity and this may vary according to the outlet temperature at which the chiller is to be designed. For final sizing please refer to the company at time of order placement.

With Freon (R-407C) Refrigerant
FLAMINGO KUHLER SERIES WATER COOLED SCREW CHILLERS WITH HANBELL SEMI-HERMETIC SCREW COMPRESSORS

Description	Units	KUHLER BWCR-05-HB	KUHLER BWCR-06-HB	KUHLER BWCR-07-HB	KUHLER BWCR-08-HB
Unit Model					
Nominal Cooling Capacity					
At Evap / Cond temp: -15 / 40 deg. C & Power Input** (KW)	TR/KW	40.76TR / 58.2KW	47.11TR / 68.0KW	51.49TR / 74.30KW	55.59TR / 81.4KW
At Evap / Cond temp: -10 / 40 deg. C & Power Input** (KW)	TR/KW	50.55TR / 59.7KW	58.40TR / 69.7KW	63.84TR / 76.20KW	68.90TR / 83.5KW
At Evap / Cond temp: -05 / 40 deg. C & Power Input** (KW)	TR/KW	61.30TR / 61.0KW	70.83TR / 71.1KW	77.41TR / 77.80KW	83.55TR / 85.3KW
At Evap / Cond temp: 0 / 40 deg. C & Power Input** (KW)	TR/KW	73.08TR / 62.2KW	84.46TR / 72.5KW	92.29TR / 79.30KW	99.63TR / 86.9KW
At Evap / Cond temp: 05 / 40 deg. C & Power Input** (KW)	TR/KW	83.55TR / 62.0KW	96.58TR / 72.3KW	105.54TR / 79.1KW	113.91TR / 86.7KW
At Evap / Cond temp: 10 / 40 deg. C & Power Input** (KW)	TR/KW	100.42TR / 65KW	116.04TR / 75.9KW	126.82TR / 830KW	136.87TR / 90.9KW
COMPRESSOR					
Compressor Type		Semi-Hermatic Screw			
Compressor Model		RC2-300B	RC2-340B	RC2-370B	RC2-410B
Compressor Qty	Nos.	1	1	1	1
Compressor Make		Hanbell Precise Machinery (Made in Taiwan)			
Unit capacity reduction steps in %		25,50,75,100	35,50,75,100	35,50,75,100	25,50,75,100
Oil Type		HBR-B05	HBR-B05	HBR-B05	HBR-B05
Oil Charge / Compr (Ltr.)	Ltrs	16L*	16L*	16L*	15L*
Sound Level at 1mtr Distance	dB (A)	79.6	80.4	81.5	83.1
Power Supply		380-420 V/3 Ph, 50Hz, AC			
Nominal HP	HP	89	101	108	121
EVAPORATOR					
Evaporator Type		Shell & Tube Direct Expansion Type With Mechanically Bonded Aluminium Star Turbulators Inserts for providing turbulence to the refrigerant			
Evaporator Model		FMT-103TR	FMT-119TR	FMT-129TR	FMT-142TR
Evaporator Qty	Nos.	1	1	1	1
No. Of Pass (Refrigerant Side)	Nos.	2	2	4	4
Tube Details	mm	12.7	12.7	19	19
Water Connection Size In/Out	Inch	4" NB***	4" NB***	4" NB***	4" NB***
Water/Brine Flow Rate (Min)	LPM	400	500	500	550
Water/Brine Flow Rate (Max)	LPM	1050	1200	1300	1450
CONDENSER					
Condenser Type		Shell & Tube Type Condenser With Outer Finned Copper Tubes Having 26Fins Per Inch			
Condenser Model		FMT-110TR	FMT-125TR	FMT-135TR	FMT-150TR
Condenser Qty	Nos.	1	1	1	1
No. Of Pass (Water Side)	Nos.	2	2	4	4
Tube Details	mm	19.05	19.05	19.05	19.05
Water Connection Size In/Out	Inch	4" NB***	4" NB***	4" NB***	5" NB***
Water Flow Rate	LPM	1470	1700	1840	2028
Cooling Tower Water In Temp. (Max.)	Deg .C	32	32	32	32
Cooling Tower Water Out Temp. (Max.)	Deg .C	35.5	35.5	35.5	35.5
EXTERNAL OIL COOLER FOR BELOW ZERO DEG.C APPLICATION					
Type		Air Cooled	Air Cooled	Air Cooled	Air Cooled
Capacity	Kw	NA	NA	NA	NA
No. of Fans	Nos.	NA	NA	NA	NA
Fan Ø	mm	NA	NA	NA	NA
Power	W	NA	NA	NA	NA
AirFlow	CFM	NA	NA	NA	NA
ECONOMISER FOR BELOW 5.0 DEG.C EVAPORATING TEMPERATURE					
Type		Shell & Tube Dx type			
Capacity	KW	27.22	31.47	34.06	37.5
CONTROL PANEL					
Starter Type		Star-Delta starter panel with optional choice of soft starter			
Microprocessor		PLC with optional choice of MCS Controls(USA) make microprocessor based control panel with step-less capacity control			
Make		Schneider			
UNIT DIMENSION & WEIGHTS					
Length	mm	3050	3050	3840	3840
Width	mm	1010	1010	1020	1020
Height	mm	2050	2050	2180	2180
Refrigerant charge qty	Kg	44	48	56	65
Net Weight	Kg	950	1050	2120	2200
Detailed Dimensions & GA Drawing On Following Pages		18	18	18	18

Rating Conditions:-

- 1).Condenser tube side fouling Factor= 0.000043 m2K/W
- 2).Evaporator shell side fouling factor= 0.000043 m2.K/W
- 3).**Power Input shown does not include oil cooler axial fan power input
- 4).Specifications are subject to change due to continuous product development.
- 5).*Oil charge to increase in case oil cooler used.
- 6).Economiser applied to all models below 5.0 deg. C Evap. Temp.
- 7).***Condenser water in & out and Evaporator water/brine in & out connection size indicated above is calculated based on chiller maximum capacity and this may vary according to the outlet temperature at which the chiller is to be designed. For final sizing please refer to the company at time of order placement.

With Freon (R-407C) Refrigerant
FLAMINGO KUHLER SERIES WATER COOLED SCREW CHILLERS WITH HANBELL SEMI-HERMETIC SCREW COMPRESSORS

Description	Units	KUHLER	KUHLER	KUHLER	KUHLER	KUHLER
Unit Model		BWCR-09-2HB	BWCR-10-2HB	BWCR-11-2HB	BWCR-12-2HB	BWCR-13-2HB
Nominal Cooling Capacity						
At Evap / Cond temp: -15 / 40 deg. C & Power Input**(KW)	TR/KW	69.08TR / 104.6KW	81.52TR / 116.4KW	94.22TR / 136.0KW	102.98TR / 148.6KW	111.18TR / 162.8KW
At Evap / Cond temp: -10 / 40 deg. C & Power Input**(KW)	TR/KW	85.40TR / 107.2KW	101.10TR / 119.4KW	116.80TR / 139.4KW	127.68TR / 152.4KW	137.80TR / 167.0KW
At Evap / Cond temp: -05 / 40 deg. C & Power Input**(KW)	TR/KW	103.54TR / 109.4KW	122.60TR / 122.0KW	141.66TR / 142.2KW	154.82TR / 155.6KW	167.10TR / 170.6KW
At Evap / Cond temp: 0 / 40 deg. C & Power Input**(KW)	TR/KW	123.46TR / 111.6KW	146.16TR / 124.4KW	168.92TR / 145.0KW	184.58TR / 158.6KW	199.26TR / 173.8KW
At Evap / Cond temp: 05 / 40 deg. C & Power Input**(KW)	TR/KW	141.16TR / 111.4KW	167.10TR / 124.0KW	193.16TR / 144.6KW	211.08TR / 158.2KW	227.82TR / 173.4KW
At Evap / Cond temp: 10 / 40 deg. C & Power Input**(KW)	TR/KW	169.6TR / 116.8KW	200.84TR / 130.0KW	235.08TR / 151.8KW	253.64TR / 166.0KW	273.74TR / 181.8KW
COMPRESSOR						
Compressor Type		Semi-Hermatic Screw				
Compressor Model		RC2-260B	RC2-300B	RC2-340B	RC2-370B	RC2-410B
Compressor Qty	Nos.	2	2	2	2	2
Compressor Make		Hanbell Precise Machinery (Made in Taiwan)				
Unit capacity reduction steps in %		25,50,75,100	25,50,75,100	35,50,75,100	35,50,75,100	25,50,75,100
Oil Type		HBR-B05	HBR-B05	HBR-B05	HBR-B05	HBR-B05
Oil Charge / Compr (Ltr.)	Ltrs	14L* X 2	16L* X 2	16L* X 2	16L* X 2	15L* X 2
Sound Level at 1mtr Distance	dB (A)	79.2	79.6	80.4	81.5	83.1
Power Supply		380-420 V/3 Ph, 50Hz, AC				
Nominal HP	HP	75 X 2	89 X 2	101 X 2	108 X 2	121 X 2
EVAPORATOR						
Evaporator Type		Shell & Tube Direct Expansion Type With Mechanically Bonded Aluminium Star Turbulators				
Evaporator Model		Inserts for providing turbulence to the refrigerant				
Evaporator Qty	Nos.	FMT-174TR	FMT-205TR	FMT-237TR	FMT-257TR	FMT-283TR
No. Of Pass (Refrigerant Side)	Nos.	1	1	1	1	1
Tube Details	mm	19	19	19	19	19
Water Connection Size In/Out	Inch	4" NB***	5" NB***	5" NB***	5" NB***	6" NB***
Water/Brine Flow Rate (Min)	LPM	700	800	900	980	1100
Water/Brine Flow Rate (Max)	LPM	1800	2100	2400	2600	2900
CONDENSER						
Condenser Type		Shell & Tube Type Condenser With Outer Finned Copper Tubes Having 26Fins Per Inch				
Condenser Model		FMT-90TR X 2	FMT-110TR X 2	FMT-125TR X 2	FMT-135TR X 2	FMT-150TR X 2
Condenser Qty	Nos.	2	2	2	2	2
No. Of Pass (Water Side)	Nos.	2	2	2	4	4
Tube Details	mm	19.05	19.05	19.05	19.05	19.05
Water Connection Size In/Out	Inch	3" NB***	4" NB***	4" NB***	4" NB***	5" NB***
Water Flow Rate	LPM	1250 X 2	1470 X 2	1700 X 2	1840 X 2	2028 X 2
Cooling Tower Water In Temp (Max.)	Deg .C	32	32	32	32	32
Cooling Tower Water Out Temp (Max.)	Deg .C	35.5	35.5	35.5	35.5	35.5
EXTERNAL OIL COOLER FOR BELOW ZERO DEG.C APPLICATION						
Type		Air Cooled	Air Cooled	Air Cooled	Air Cooled	Air Cooled
Capacity	Kw	NA	NA	NA	NA	NA
No. of Fans	Nos.	NA	NA	NA	NA	NA
Fan Ø	mm	NA	NA	NA	NA	NA
Power	W	NA	NA	NA	NA	NA
AirFlow	CFM	NA	NA	NA	NA	NA
ECONOMISER FOR BELOW 5.0 DEG.C EVAPORATING TEMPERATURE						
Type		Shell & Tube Dx type				
Capacity	KW	23.1 X 2	27.22 X 2	31.47 X 2	34.06 X 2	37.5 X 2
CONTROL PANEL						
Starter Type		Star-Delta starter panel with optional choice of soft starter				
Microprocessor		PLC with optional choice of MCS Controls(USA) make microprocessor based control panel with step-less capacity control				
Make		Schneider				
UNIT DIMENSION & WEIGHTS						
Length	mm	3822	3822	3822	4446	4446
Width	mm	1574	1674	1674	1974	1974
Height	mm	1900	2100	2100	2338	2438
Refrigerant charge qty	Kg	50 X 2	44 X 2	48 X 2	56 X 2	65 X 2
Net Weight	Kg	1500	1700	1800	3800	4200
Detailed Dimensions & GA Drawing On Following Pages		22	22	22	22	22

Rating Conditions:-

- 1).Condenser tube side fouling Factor= 0.000043 m2K/W
- 2).Evaporator shell side fouling factor= 0.000043 m2.K/W
- 3).**Power Input shown does not include oil cooler axial fan power input
- 4).Specifications are subject to change due to continuous product development.
- 5).*Oil charge to increase in case oil cooler used.
- 6).Economiser applied to all models below 5.0 deg. C Evap. Temp.
- 7).***Condenser water in & out and Evaporator water/brine in & out connection size indicated above is calculated based on chiller maximum capacity and this may vary according to the outlet temperature at which the chiller is to be designed. For final sizing please refer to the company at time of order placement.

With Freon (R-134a) Refrigerant
FLAMINGO KUHLER SERIES WATER COOLED SCREW CHILLERS WITH HANBELL SEMI-HERMETIC SCREW COMPRESSORS

Description	Units	KUHLER AWCR-01-HB	KUHLER AWCR-02-HB	KUHLER AWCR-03-HB	KUHLER AWCR-04-HB
Unit Model					
Nominal Cooling Capacity					
At Evap / Cond temp: -20 / 40 deg. C & Power Input**(KW)	TR / (KW)	7.02TR / 13.8KW	9.81TR / 18.5KW	14.19TR / 25.9KW	18.6TR / 34.4KW
At Evap / Cond temp: -15 / 40 deg. C & Power Input**(KW)	TR / (KW)	9.04TR / 14.6KW	12.66TR / 19.1KW	18.29TR / 26.7KW	23.95TR / 35.5KW
At Evap / Cond temp: -10 / 40 deg. C & Power Input**(KW)	TR / (KW)	11.23TR / 15KW	15.73TR / 19.6KW	22.73TR / 27.4KW	29.75TR / 36.3KW
At Evap / Cond temp: -05 / 40 deg. C & Power Input**(KW)	TR / (KW)	13.68TR / 15.2KW	19.11TR / 19.9KW	27.65TR / 27.8KW	36.27TR / 36.9KW
At Evap / Cond temp: 0 / 40 deg. C & Power Input**(KW)	TR / (KW)	16.41TR / 15.3KW	22.93TR / 20.0KW	33.17TR / 28KW	43.44TR / 37.2KW
At Evap / Cond temp: 05 / 40 deg. C & Power Input**(KW)	TR / (KW)	18TR / 14.6KW	25.17TR / 19.1KW	36.33TR / 26.7KW	47.65TR / 35.4KW
At Evap / Cond temp: 10 / 40 deg. C & Power Input**(KW)	TR / (KW)	21.84TR / 14.8KW	30.55TR / 19.4KW	44.15TR / 27.1KW	57.83TR / 36KW
At Evap / Cond temp: 15 / 40 deg. C & Power Input**(KW)	TR / (KW)	26.34TR / 15KW	36.84TR / 19.7KW	53.25TR / 27.5KW	69.75TR / 36.5KW
At Evap / Cond temp: 20 / 40 deg. C & Power Input**(KW)	TR / (KW)	31.57TR / 15.2KW	44.15TR / 19.9KW	63.81TR / 27.8KW	83.58TR / 36.9KW
COMPRESSOR					
Compressor Type		Semi-Hermatic Screw			
Compressor Model		RC2-100B	RC2-140B	RC2-200B	RC2-260B
Compressor Qty	Nos.	1	1	1	1
Compressor Make		Hanbell Precise Machinery (Made in Taiwan)			
Unit capacity reduction steps in %		33,66,100	33,66,100	25,50,75,100	25,50,75,100
Oil Type		HBR-B05	HBR-B05	HBR-B05	HBR-B05
Oil Charge / Compr (Ltr.)	Ltrs	7L*	7L*	8L*	14L*
Sound Level at 1mtr Distance	dB (A)	73.1	73.7	78.4	79.2
Power Supply		380-420 V/3 Ph, 50Hz, AC			
Nominal HP	HP	31	41	58	75
EVAPORATOR					
Evaporator Type		Shell & Tube Direct Expansion Type With Mechanically Bonded Aluminium Star Turbulators Inserts for providing turbulence to the refrigerant			
Evaporator Model		FMT-33TR	FMT-46TR	FMT-65TR	FMT-87TR
Evaporator Qty	Nos.	1	1	1	1
No. Of Pass (Refrigerant Side)	Nos.	2	2	2	2
Tube Details	mm	12.7	12.7	12.7	12.7
Water Connection Size In/Out	Inch	2.5" NB***	2.5" NB***	3" NB***	3" NB***
Water/Brine Flow Rate (Min)	LPM	150	200	280	350
Water/Brine Flow Rate (Max)	LPM	330	460	650	870
CONDENSER					
Condenser Type		Shell & Tube Type Condenser With Outer Finned Copper Tubes Having 26Fins Per Inch			
Condenser Model		FMT-35TR	FMT-50TR	FMT-70TR	FMT-90TR
Condenser Qty	Nos.	1	1	1	1
No. Of Pass (Water Side)	Nos.	2	2	2	2
Tube Details	mm	19.05	19.05	19.05	19.05
Water Connection Size In/Out	Inch	2.5" NB***	2.5" NB***	3" NB***	3" NB***
Water Flow Rate	LPM	460	650	935	1250
Cooling Tower Water In Temp (Max.)	Deg. C	32	32	32	32
Cooling Tower Water Out Temp (Max.)	Deg. C	35.5	35.5	35.5	35.5
EXTERNAL OIL COOLER FOR BELOW ZERO DEG.C APPLICATION					
Type		Air Cooled	Air Cooled	Air Cooled	Air Cooled
Capacity	Kw	NA	NA	NA	NA
No. of Fans	Nos.	NA	NA	NA	NA
Fan Ø	mm	NA	NA	NA	NA
Power	W	NA	NA	NA	NA
AirFlow	CFM	NA	NA	NA	NA
ECONOMISER FOR BELOW 5.0 DEG.C EVAPORATING TEMPERATURE					
Type		Shell & Tube Dx type			
Capacity	KW	8.69	12.09	17.27	23.1
CONTROL PANEL					
Starter Type		Star-Delta starter panel with optional choice of soft starter			
Microprocessor		PLC with optional choice of MCS Controls(USA) make microprocessor based control panel			
Make		Schneider			
UNIT DIMENSION & WEIGHTS					
Length	mm	2760	2760	2760	3050
Width	mm	860	860	950	950
Height	mm	1700	1700	1800	1950
Refrigerant charge qty	Kg	25	32	42	50
Net Weight	Kg	680	700	775	850
Detailed Dimensions & GA Drawing On Following Pages		18	18	18	18

Rating Conditions:-

- 1).Condenser tube side fouling Factor= 0.000043 m2K/W
- 2).Evaporator shell side fouling factor= 0.000043 m2.K/W
- 3).**Power Input shown does not include oil cooler axial fan power input
- 4).Specifications are subject to change due to continuous product development.
- 5).*Oil charge to increase in case oil cooler used.
- 6).Economiser applied to all models below 5.0 deg. C Evap. Temp.
- 7).***Condenser water in & out and Evaporator water/brine in & out connection size indicated above is calculated based on chiller maximum capacity and this may vary according to the outlet temperature at which the chiller is to be designed. For final sizing please refer to the company at time of order placement.

With Freon (R-134a) Refrigerant
FLAMINGO KUHLER SERIES WATER COOLED SCREW CHILLERS WITH HANBELL SEMI-HERMETIC SCREW COMPRESSORS

Description	Units	KUHLER AWCR-05-HB	KUHLER AWCR-06-HB	KUHLER AWCR-07-HB	KUHLER AWCR-08-HB
Unit Model					
Nominal Cooling Capacity					
At Evap / Cond temp: -20 / 40 deg. C & Power Input**(KW)	TR / (KW)	22.41TR / 39.3KW	25.4TR / 45.2KW	28.22TR / 48.8KW	31.06TR / 55.1KW
At Evap / Cond temp: -15 / 40 deg. C & Power Input**(KW)	TR / (KW)	28.87TR / 40.6KW	32.71TR / 46.7KW	36.33TR / 50.4KW	40.00TR / 56.9KW
At Evap / Cond temp: -10 / 40 deg. C & Power Input**(KW)	TR / (KW)	35.90TR / 41.6KW	40.68TR / 47.8KW	45.14TR / 51.6KW	49.70TR / 58.2KW
At Evap / Cond temp: -05 / 40 deg. C & Power Input**(KW)	TR / (KW)	43.66TR / 42.2KW	49.5TR / 48.5KW	54.96TR / 52.4KW	60.51TR / 59.2KW
At Evap / Cond temp: 0 / 40 deg. C & Power Input**(KW)	TR / (KW)	52.37TR / 42.6KW	59.31TR / 49.0KW	65.91TR / 52.8KW	72.54TR / 59.7KW
At Evap / Cond temp: 05 / 40 deg. C & Power Input**(KW)	TR / (KW)	57.43TR / 40.5KW	65.12TR / 46.6KW	72.29TR / 50.3KW	79.57TR / 56.8KW
At Evap / Cond temp: 10 / 40 deg. C & Power Input**(KW)	TR / (KW)	69.75TR / 41.2KW	79.06TR / 47.4KW	87.73TR / 51.1KW	96.58TR / 57.7KW
At Evap / Cond temp: 15 / 40 deg. C & Power Input**(KW)	TR / (KW)	84.09TR / 41.8KW	95.33TR / 48.0KW	105.85TR / 51.8KW	116.50TR / 58.5KW
At Evap / Cond temp: 20 / 40 deg. C & Power Input**(KW)	TR / (KW)	100.73TR / 42.2KW	114.25TR / 48.6KW	126.82TR / 52.4KW	139.63TR / 59.2KW
COMPRESSOR					
Compressor Type		Semi-Hermatic Screw			
Compressor Model		RC2-300B	RC2-340B	RC2-370B	RC2-410B
Compressor Qty	Nos.	1	1	1	1
Compressor Make		Hanbell Precise Machinery (Made in Taiwan)			
Unit capacity reduction steps in %		25,50,75,100	35,50,75,100	35,50,75,100	25,50,75,100
Oil Type		HBR-B05	HBR-B05	HBR-B05	HBR-B05
Oil Charge / Compr (Ltr.)	Ltrs	16L*	16L*	16L*	15L*
Sound Level at 1mtr Distance	dB (A)	79.6	80.4	81.5	83.1
Power Supply		380-420 V/3 Ph, 50Hz, AC			
Nominal HP	HP	89	101	108	121
EVAPORATOR					
Evaporator Type		Shell & Tube Direct Expansion Type With Mechanically Bonded Aluminium Star Turbulators Inserts for providing turbulence to the refrigerant			
Evaporator Model		FMT-103TR	FMT-119TR	FMT-129TR	FMT-142TR
Evaporator Qty	Nos.	1	1	1	1
No. Of Pass (Refrigerant Side)	Nos.	2	2	4	4
Tube Details	mm	12.7	12.7	19	19
Water Connection Size In/Out	Inch	4" NB***	4" NB***	4" NB***	4" NB***
Water/Brine Flow Rate (Min)	LPM	400	500	500	550
Water/Brine Flow Rate (Max)	LPM	1050	1200	1300	1450
CONDENSER					
Condenser Type		Shell & Tube Type Condenser With Outer Finned Copper Tubes Having 26Fins Per Inch			
Condenser Model		FMT-110TR	FMT-125TR	FMT-135TR	FMT-150TR
Condenser Qty	Nos.	1	1	1	1
No. Of Pass (Water Side)	Nos.	2	2	4	4
Tube Details	mm	19.05	19.05	19.05	19.05
Water Connection Size In/Out	Inch	4" NB***	4" NB***	4" NB***	5" NB***
Water Flow Rate	LPM	1470	1700	1840	2028
Cooling Tower Water In Temp (Max.)	Deg .C	32	32	32	32
Cooling Tower Water Out Temp (Max.)	Deg .C	35.5	35.5	35.5	35.5
EXTERNAL OIL COOLER FOR BELOW ZERO DEG.C APPLICATION					
Type		Air Cooled	Air Cooled	Air Cooled	Air Cooled
Capacity	Kw	NA	NA	NA	NA
No. of Fans	Nos.	NA	NA	NA	NA
Fan Ø	mm	NA	NA	NA	NA
Power	W	NA	NA	NA	NA
AirFlow	CFM	NA	NA	NA	NA
ECONOMISER FOR BELOW 5.0 DEG.C EVAPORATING TEMPERATURE					
Type		Shell & Tube Dx type			
Capacity	KW	27.22	31.47	34.06	37.5
CONTROL PANEL					
Starter Type		Star-Delta starter panel with optional choice of soft starter			
Microprocessor		PLC with optional choice of MCS Controls(USA) make microprocessor based control panel with step-less capacity control			
Make		Schneider			
UNIT DIMENSION & WEIGHTS					
Length	mm	3050	3050	3840	3840
Width	mm	1010	1010	1020	1020
Height	mm	2050	2050	2180	2180
Refrigerant charge qty	Kg	44	48	56	65
Net Weight	Kg	950	1050	2120	2200
Detailed Dimensions & GA Drawing On Following Pages		18	18	18	18

Rating Conditions:-

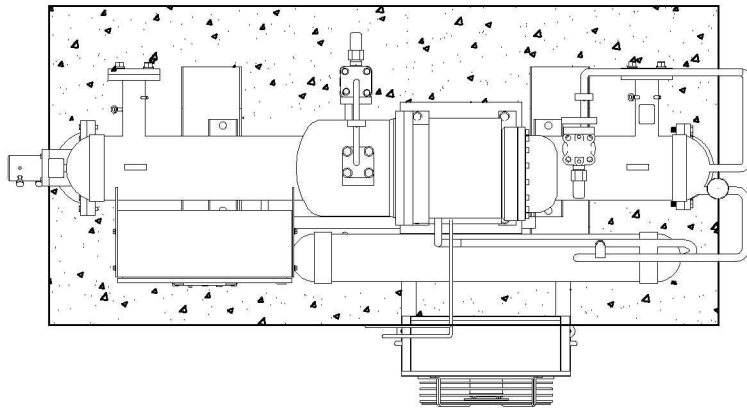
- 1). Condenser tube side fouling Factor= 0.000043 m2K/W
- 2). Evaporator shell side fouling factor= 0.000043 m2.K/W
- 3). **Power Input shown does not include oil cooler axial fan power input
- 4). Specifications are subject to change due to continuous product development.
- 5). *Oil charge to increase in case oil cooler used.
- 6). Economiser applied to all models below 5.0 deg. C Evap. Temp.
- 7). ***Condenser water in & out and Evaporator water/brine in & out connection size indicated above is calculated based on chiller maximum capacity and this may vary according to the outlet temperature at which the chiller is to be designed. For final sizing please refer to the company at time of order placement.

With Freon (R-134a) Refrigerant
FLAMINGO KUHLER SERIES WATER COOLED SCREW CHILLERS WITH HANBELL SEMI-HERMETIC SCREW COMPRESSORS

Description	Units	KUHLER	KUHLER	KUHLER	KUHLER	KUHLER
Unit Model		AWCR-09-2HB	AWCR-10-2HB	AWCR-11-2HB	AWCR-12-2HB	AWCR-13-2HB
Nominal Cooling Capacity						
At Evap / Cond temp: -20 / 40 deg. C & Power Input**(KW)	TR / (KW)	37.2TR / 68.8KW	44.82TR / 78.6KW	50.8TR / 90.4KW	56.44TR / 97.6KW	62.12TR / 110.2KW
At Evap / Cond temp: -15 / 40 deg. C & Power Input**(KW)	TR / (KW)	47.9TR / 71KW	57.6TR / 81.2KW	65.42TR / 93.4KW	72.66TR / 100.8KW	80.0TR / 113.8KW
At Evap / Cond temp: -10 / 40 deg. C & Power Input**(KW)	TR / (KW)	59.5TR / 72.6KW	71.8TR / 83.2KW	81.36TR / 95.6KW	90.28TR / 103.2KW	99.4TR / 116.4KW
At Evap / Cond temp: -05 / 40 deg. C & Power Input**(KW)	TR / (KW)	72.4TR / 73.8KW	87.32TR / 84.4KW	99TR / 97KW	109.92TR / 104.8KW	121.02TR / 118.4KW
At Evap / Cond temp: 0 / 40 deg. C & Power Input**(KW)	TR / (KW)	86.88TR / 74.4KW	104.6TR / 85.2KW	118.62TR / 98KW	131.82TR / 105.6KW	145.08TR / 119.4KW
At Evap / Cond temp: 05 / 40 deg. C & Power Input**(KW)	TR / (KW)	95.3TR / 70.8KW	114.86TR / 81KW	130.24TR / 93.2KW	144.58TR / 100.6KW	159.14TR / 113.6KW
At Evap / Cond temp: 10 / 40 deg. C & Power Input**(KW)	TR / (KW)	115.66TR / 72KW	139.5TR / 82.4KW	158.12TR / 94.8KW	175.46TR / 102.2KW	193.16TR / 115.4KW
At Evap / Cond temp: 15 / 40 deg. C & Power Input**(KW)	TR / (KW)	139.5TR / 73KW	168.18TR / 83.6KW	190.66TR / 96KW	211.7TR / 103.6KW	233.00TR / 117.0KW
At Evap / Cond temp: 20 / 40 deg. C & Power Input**(KW)	TR / (KW)	167.16TR / 73.8KW	201.46TR / 84.4KW	228.5TR / 97.2KW	253.64TR / 104.8KW	279.26TR / 118.4KW
COMPRESSOR						
Compressor Type		Semi-Hermatic Screw				
Compressor Model		RC2-260B	RC2-300B	RC2-340B	RC2-370B	RC2-410B
Compressor Qty	Nos.	2	2	2	2	2
Compressor Make		Hanbell Precise Machinery (Made in Taiwan)				
Unit capacity reduction steps in %		25,50,75,100	25,50,75,100	35,50,75,100	35,50,75,100	25,50,75,100
Oil Type		HBR-B05	HBR-B05	HBR-B05	HBR-B05	HBR-B05
Oil Charge / Compr (Ltr.)	Ltrs	14L* X 2	16L* X 2	16L* X 2	16L* X 2	15L* X 2
Sound Level at 1mtr Distance	dB (A)	79.2	79.6	80.4	81.5	83.1
Power Supply		380-420 V/3 Ph, 50Hz, AC				
Nominal HP	HP	75 X 2	89 X 2	101 X 2	108 X 2	121 X 2
EVAPORATOR						
Evaporator Type		Shell & Tube Direct Expansion Type With Mechanically Bonded Aluminium Star Turbulators Inserts for providing turbulence to the refrigerant				
Evaporator Model		FMT-174TR	FMT-205TR	FMT-237TR	FMT-257TR	FMT-283TR
Evaporator Qty	Nos.	1	1	1	1	1
No. Of Pass (Refrigerant Side)	Nos.	1	1	1	1	1
Tube Details	mm	19	19	19	19	19
Water Connection Size In/Out	Inch	4" NB***	5" NB***	5" NB***	5" NB***	6" NB***
Water/Brine Flow Rate (Min)	LPM	700	800	900	980	1100
Water/Brine Flow Rate (Max)	LPM	1800	2100	2400	2600	2900
CONDENSER						
Condenser Type		Shell & Tube Type Condenser With Outer Finned Copper Tubes Having 26Fins Per Inch				
Condenser Model		FMT-90TR X 2	FMT-110TR X 2	FMT-125TR X 2	FMT-135TR X 2	FMT-150TR X 2
Condenser Qty	Nos.	2	2	2	2	2
No. Of Pass (Water Side)	Nos.	2	2	2	4	4
Tube Details	mm	19.05	19.05	19.05	19.05	19.05
Water Connection Size In/Out	Inch	3" NB***	4" NB***	4" NB***	4" NB***	5" NB***
Water Flow Rate	LPM	1250 X 2	1470 X 2	1700 X 2	1840 X 2	2028 X 2
Cooling Tower Water In Temp. (Max.)	Deg. C	32	32	32	32	32
Cooling Tower Water Out Temp. (Max.)	Deg. C	35.5	35.5	35.5	35.5	35.5
EXTERNAL OIL COOLER FOR BELOW ZERO DEG.C APPLICATION						
Type		Air Cooled	Air Cooled	Air Cooled	Air Cooled	Air Cooled
Capacity	Kw	NA	NA	NA	NA	NA
No. of Fans	Nos.	NA	NA	NA	NA	NA
Fan Ø	mm	NA	NA	NA	NA	NA
Power	W	NA	NA	NA	NA	NA
AirFlow	CFM	NA	NA	NA	NA	NA
ECONOMISER FOR BELOW 5.0 DEG.C EVAPORATING TEMPERATURE						
Type		Shell & Tube Dx type				
Capacity	KW	23.1 X 2	27.22 X 2	31.47 X 2	34.06 X 2	37.5 X 2
CONTROL PANEL						
Starter Type		Star-Delta starter panel with optional choice of soft starter				
Microprocessor		PLC with optional choice of MCS Controls(USA) make microprocessor based control panel with step-less capacity control				
Make		Schneider				
UNIT DIMENSION & WEIGHTS						
Length	mm	3822	3822	3822	4446	4446
Width	mm	1574	1674	1674	1974	1974
Height	mm	1900	2100	2100	2338	2438
Refrigerant charge qty	Kg	50 X 2	44 X 2	48 X 2	56 X 2	65 X 2
Net Weight	Kg	1500	1700	1800	3800	4200
Detailed Dimensions & GA Drawing On Following Pages		22	22	22	22	22

Rating Conditions:-

- 1).Condenser tube side fouling Factor= 0.000043 m2K/W
- 2).Evaporator shell side fouling factor= 0.000043 m2.K/W
- 3).**Power Input shown does not include oil cooler axial fan power input
- 4).Specifications are subject to change due to continuous product development.
- 5).*Oil charge to increase in case oil cooler used.
- 6).Economiser applied to all models below 5.0 deg. C Evap. Temp.
- 7).***Condenser water in & out and Evaporator water/brine in & out connection size indicated above is calculated based on chiller maximum capacity and this may vary according to the outlet temperature at which the chiller is to be designed. For final sizing please refer to the company at time of order placement.

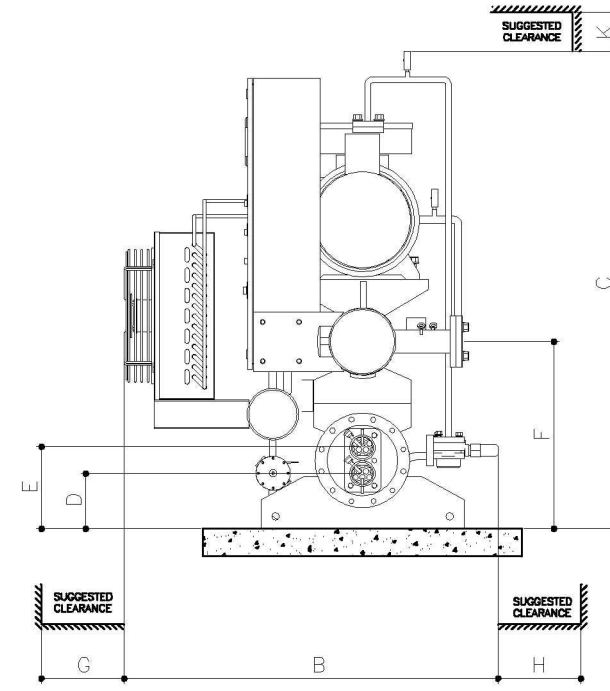
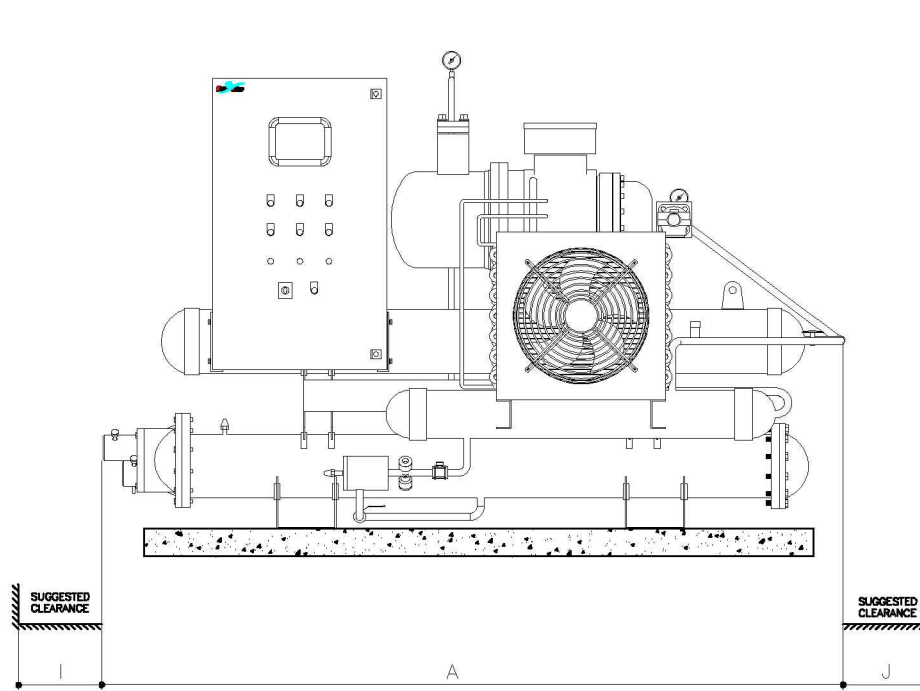


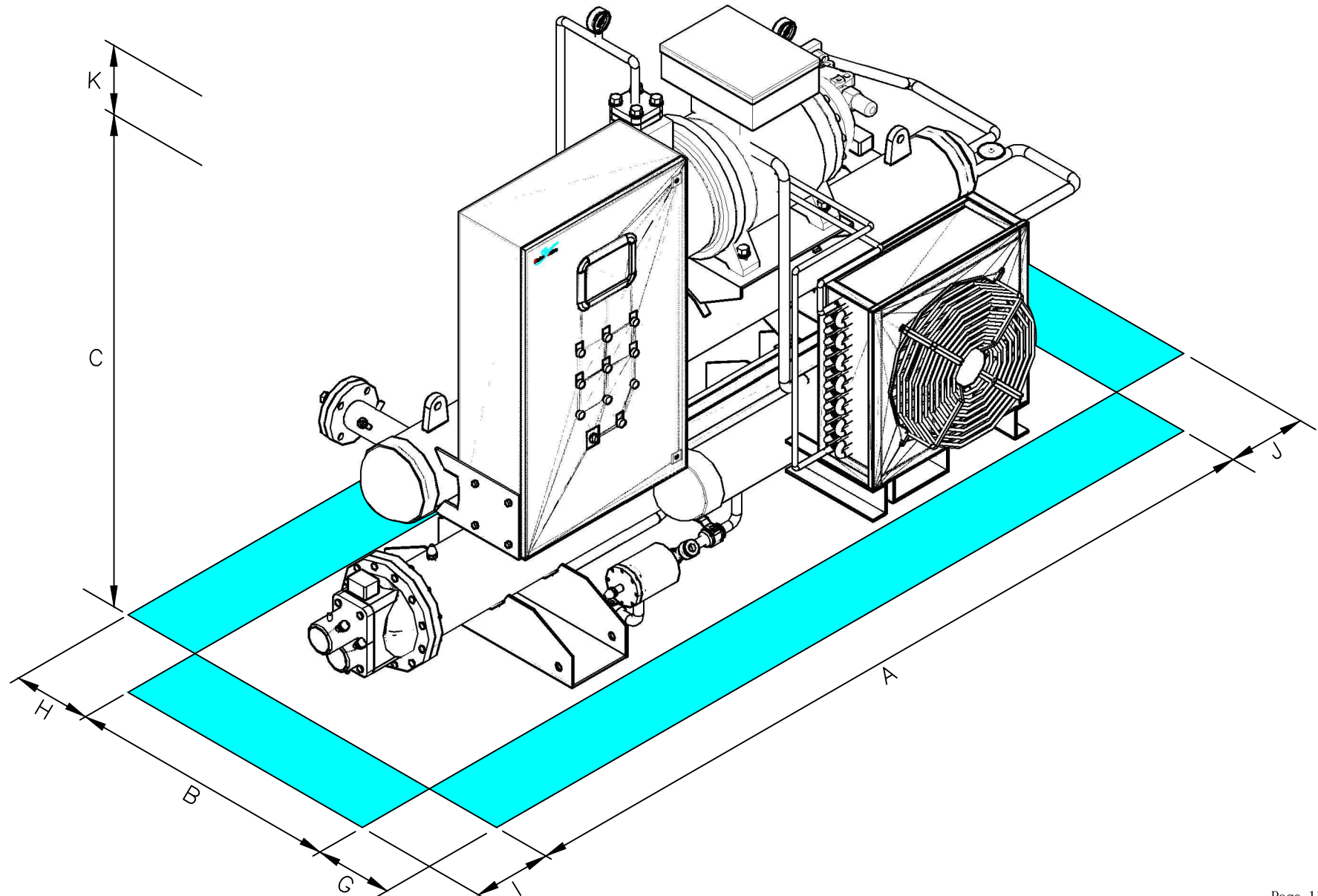
dimensions & clearance

MODEL	A	B	C	D	E	F	G	H	I	J	K
CWCR-01-HB	2750	1310	1700	180	300	690	1000	1000	1000	2250	300
CWCR-02-HB	2750	1310	1700	180	300	745	1000	1000	1000	2250	300
CWCR-03-HB	2750	1400	1800	240	350	800	1000	1000	1000	2250	300
CWCR-04-HB	3050	1400	1950	240	350	800	1000	1000	1000	2550	300
CWCR-05-HB	3050	1460	2050	290	400	830	1000	1000	1000	2550	300
CWCR-06-HB	3050	1460	2050	290	400	830	1000	1000	1000	2550	300
CWCR-07-HB	3840	1470	2180	290	400	830	1000	1000	1000	3340	300
CWCR-08-HB	3840	1470	2180	340	450	880	1000	1000	1000	3340	300

Nomenclature

A	End to End Length	G	Suggested Clearance
B	End to End Width	H	Suggested Clearance
C	End to End Height	I	Suggested Clearance
D	CT Water Inlet Flange Center Distance from Base	J	Suggested Clearance
E	CT Water Outlet Flange Center Distance from Base	K	Suggested Clearance
F	Chilled Water Inlet/Outlet Center Distance from Base		

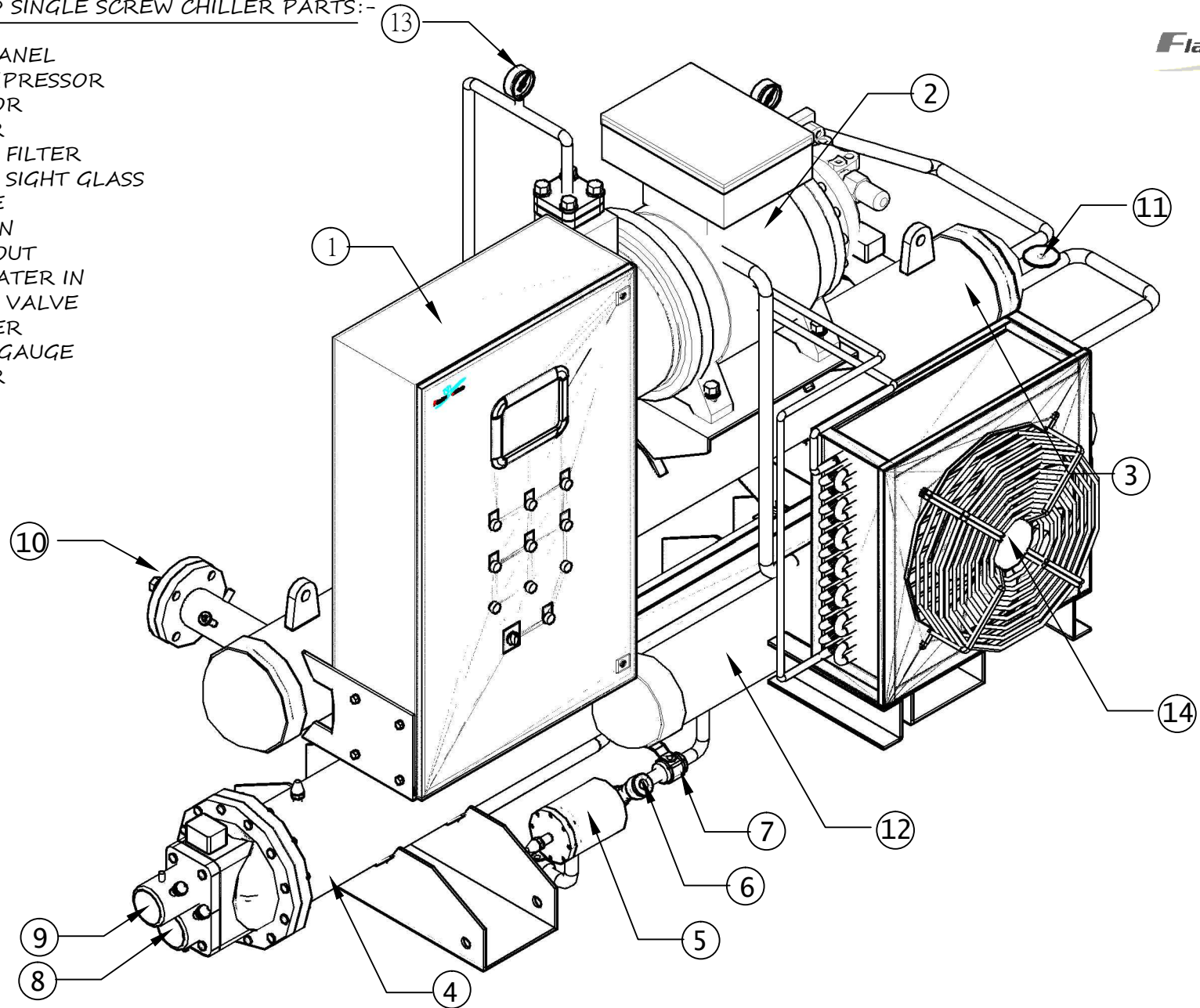




WATER COOLED SINGLE SCREW CHILLER PARTS:-



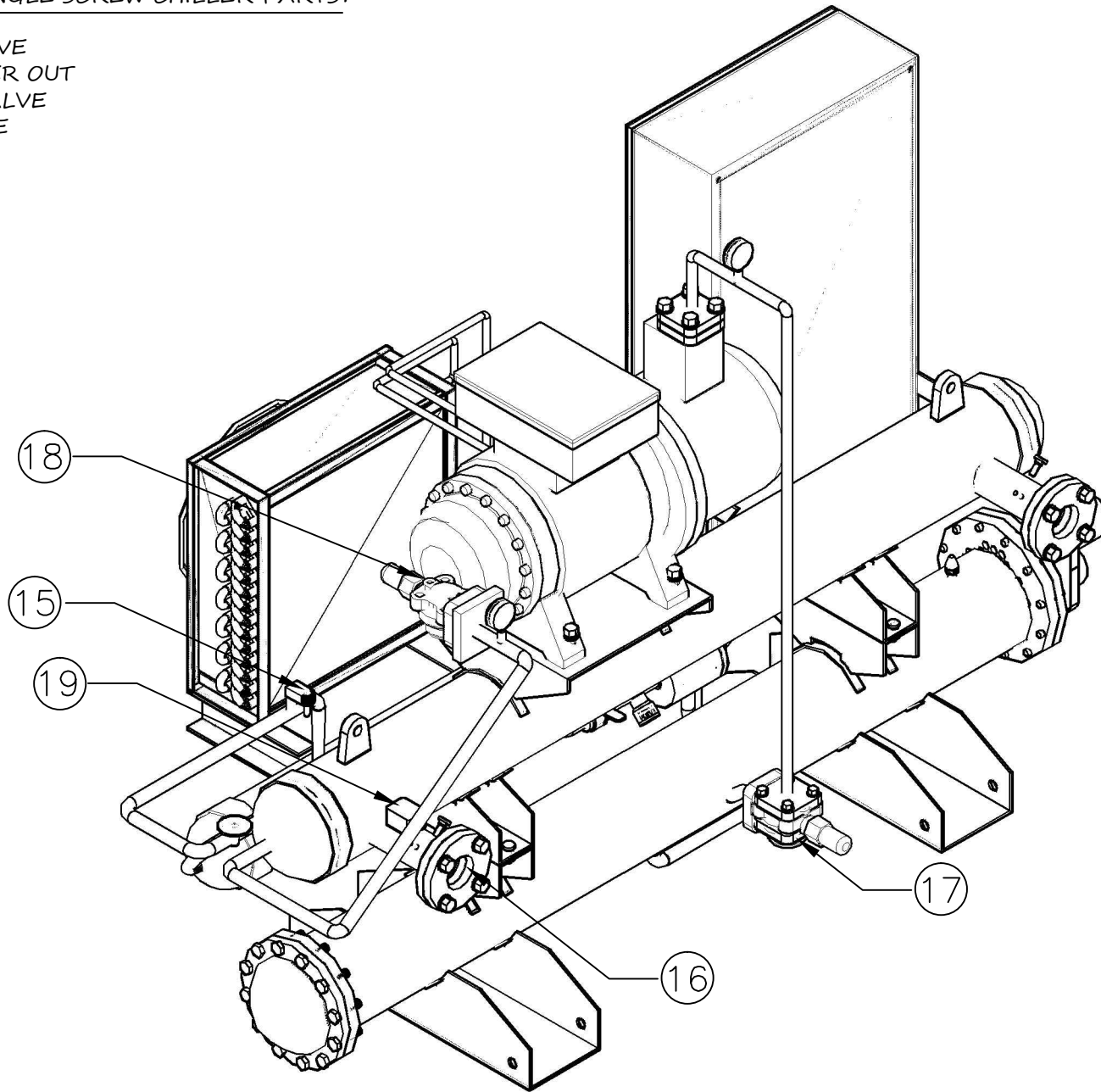
- 1). CONTROL PANEL
- 2). SCREW COMPRESSOR
- 3). EVAPORATOR
- 4). CONDENSER
- 5). LIQUID LINE FILTER
- 6). LIQUID LINE SIGHT GLASS
- 7). BALL VALVE
- 8). CT WATER IN
- 9). CT WATER OUT
- 10). CHILLED WATER IN
- 11). EXPANSION VALVE
- 12). ECONOMIZER
- 13). PRESSURE GAUGE
- 14). OIL COOLER

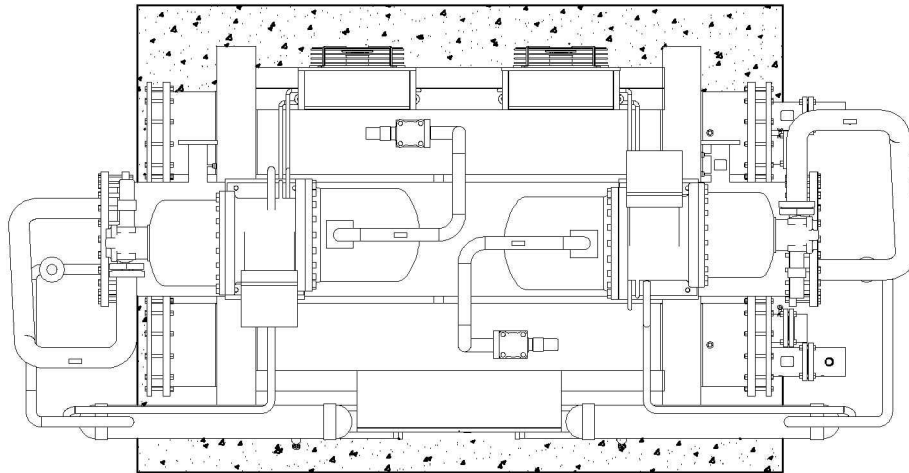


WATER COOLED SINGLE SCREW CHILLER PARTS:-



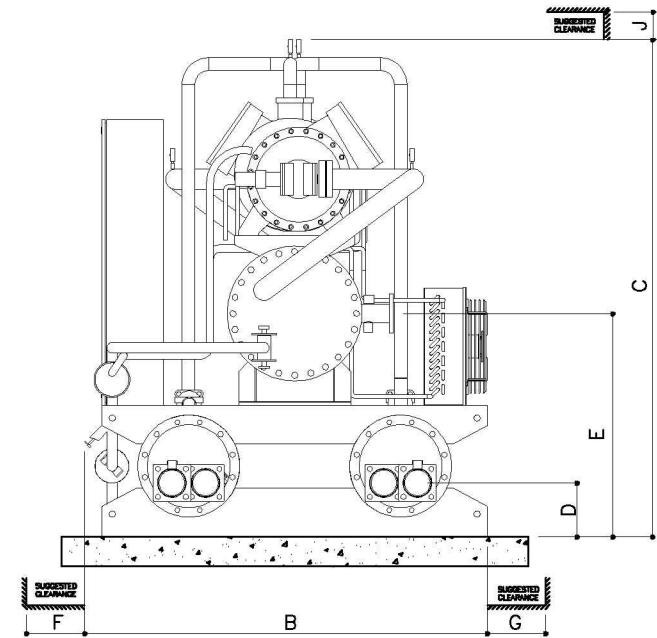
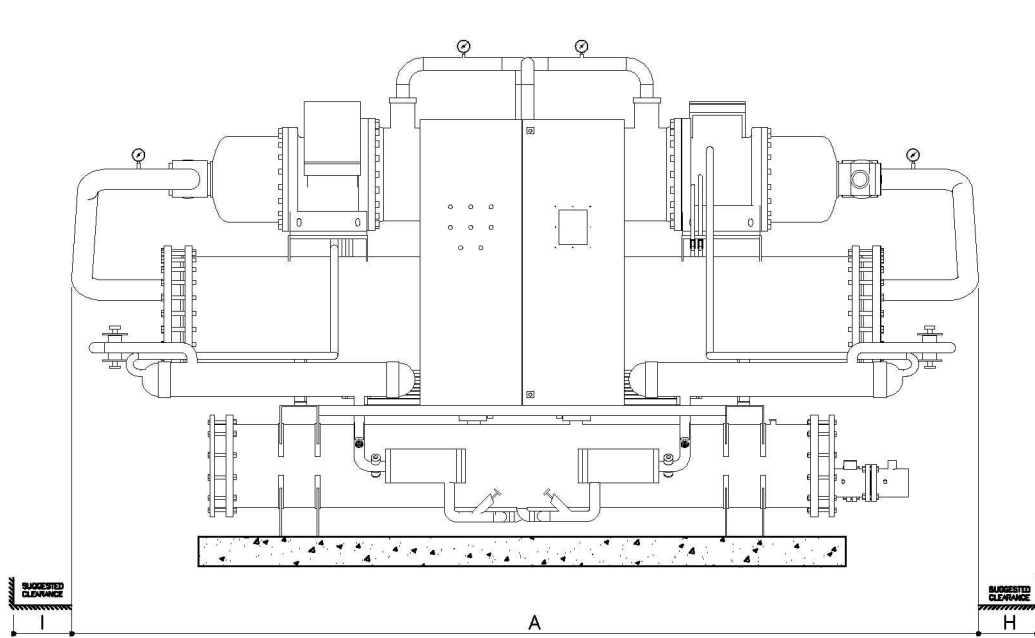
- 15). SOLENOID VALVE
- 16). CHILLED WATER OUT
- 17). DISCHARGE VALVE
- 18). SUCTION VALVE
- 19). FLOW SWITCH

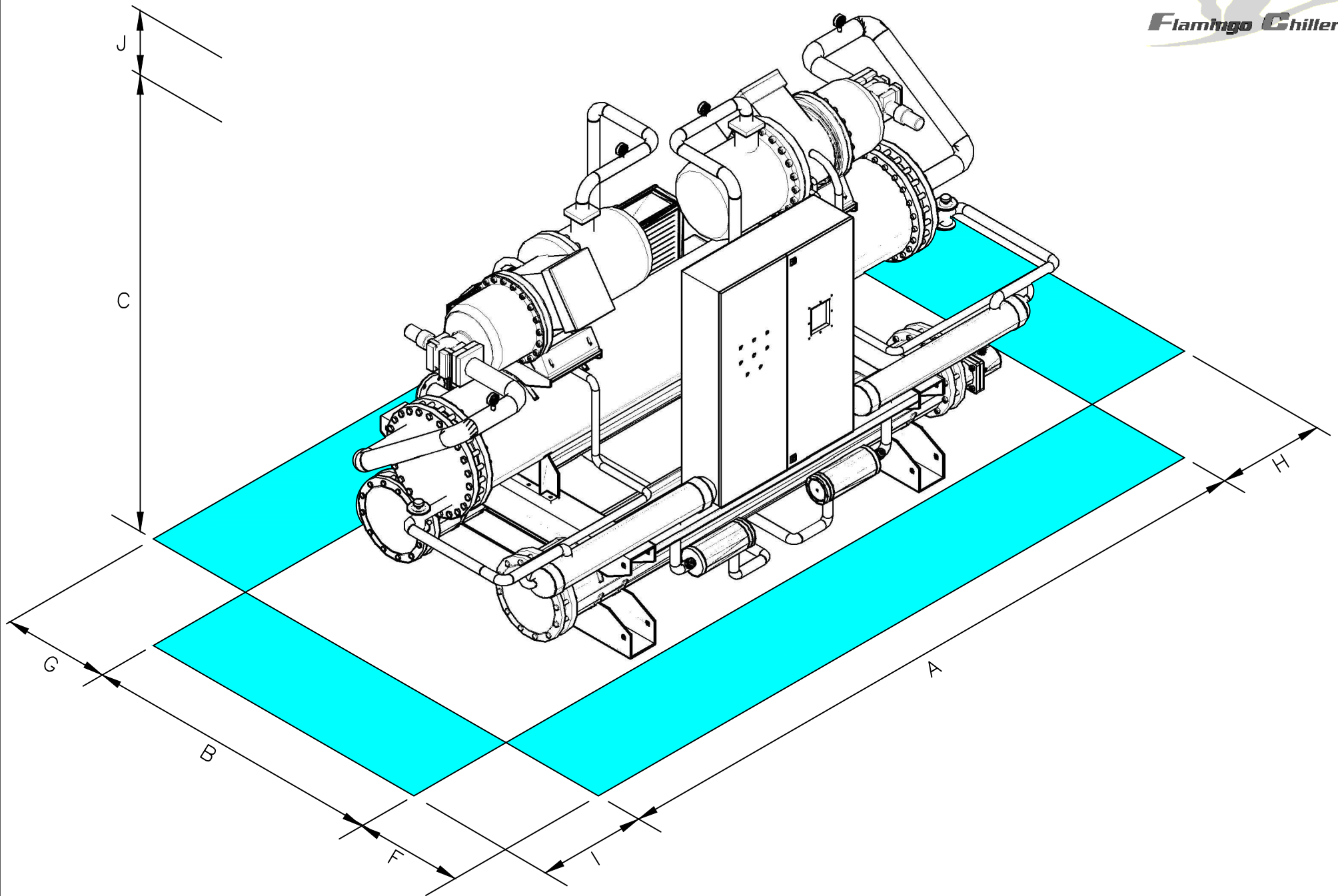




dimensions & clearances										
MODEL	A	B	C	D	E	F	G	H	I	J
CWCR-08-2HB	3822	1574	1800	215	1048	1000	1000	1000	2000	300
CWCR-10-2HB	3822	1674	2100	215	1048	1000	1000	1000	2000	300
CWCR-11-2HB	3822	1674	2100	215	1048	1000	1000	1000	2000	300
CWCR-12-2HB	4446	1674	2338	240	1048	1000	1000	1000	3000	300
CWCR-13-2HB	4446	1674	2438	265	1088	1000	1000	1000	3000	300

Nomenclature		
A	End to End Length	F Suggested Clearance
B	End to End Width	G Suggested Clearance
C	End to End Height	H Suggested Clearance
D	CT Water Inlet/Outlet Flange Center Distance from Base	I Suggested Clearance
E	Chilled Water/Brine Inlet/Outlet Center Distance from Base	J Suggested Clearance

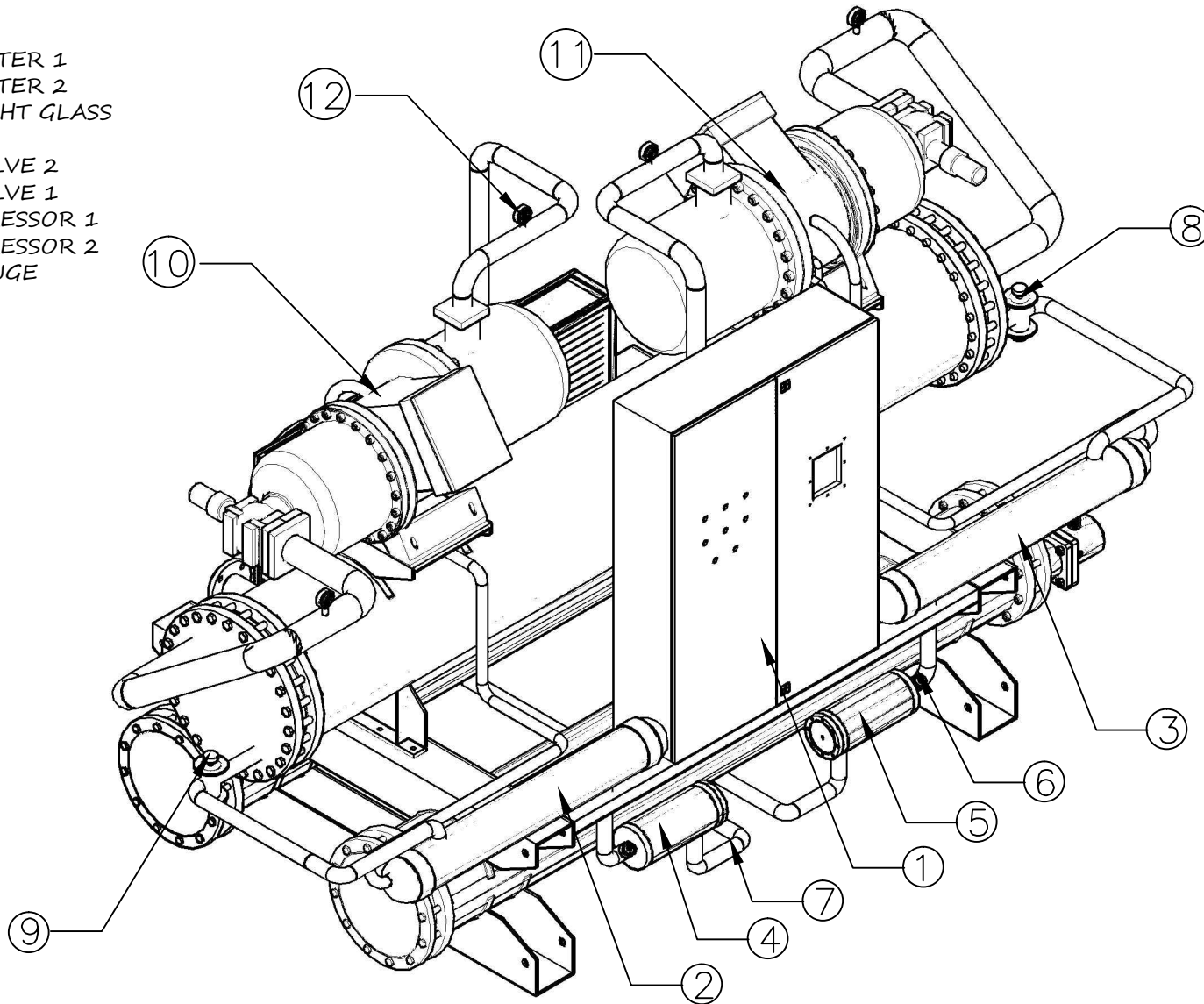




WATER COOLED DOUBLE SCREW CHILLER PARTS:-



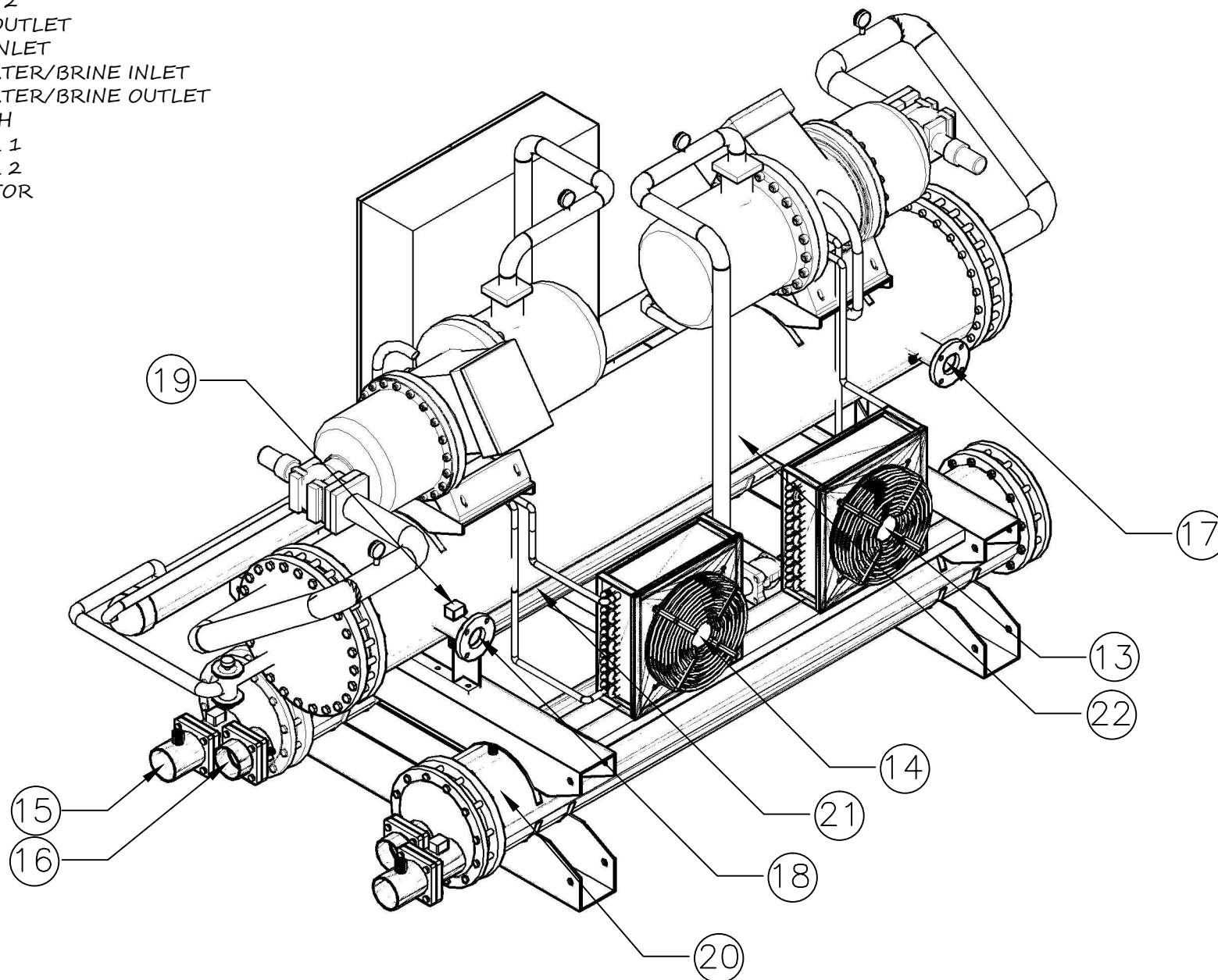
- 1). CONTROL PANEL
- 2). ECONOMIZER 1
- 3). ECONOMIZER 2
- 4). LIQUID LINE FILTER 1
- 5). LIQUID LINE FILTER 2
- 6). LIQUID LINE SIGHT GLASS
- 7). GLOVE VALVE
- 8). EXPANSION VALVE 2
- 9). EXPANSION VALVE 1
- 10). SCREW COMPRESSOR 1
- 11). SCREW COMPRESSOR 2
- 12). PRESSURE GAUGE

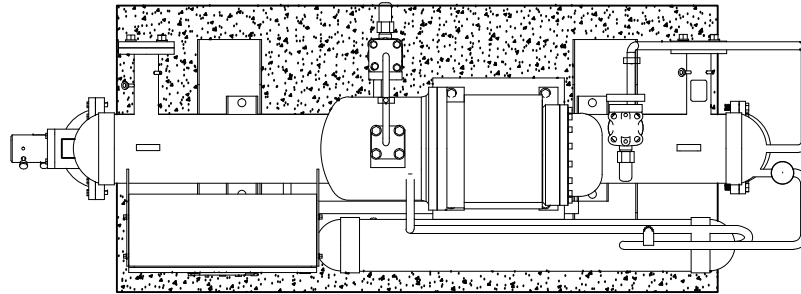


WATER COOLED DOUBLE SCREW CHILLER PARTS:-



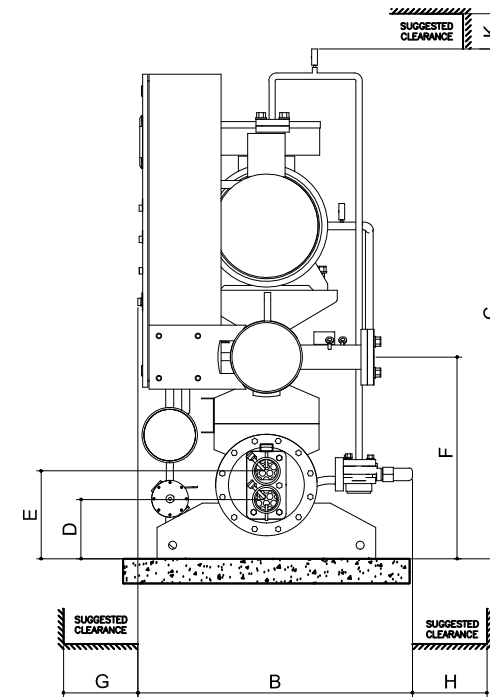
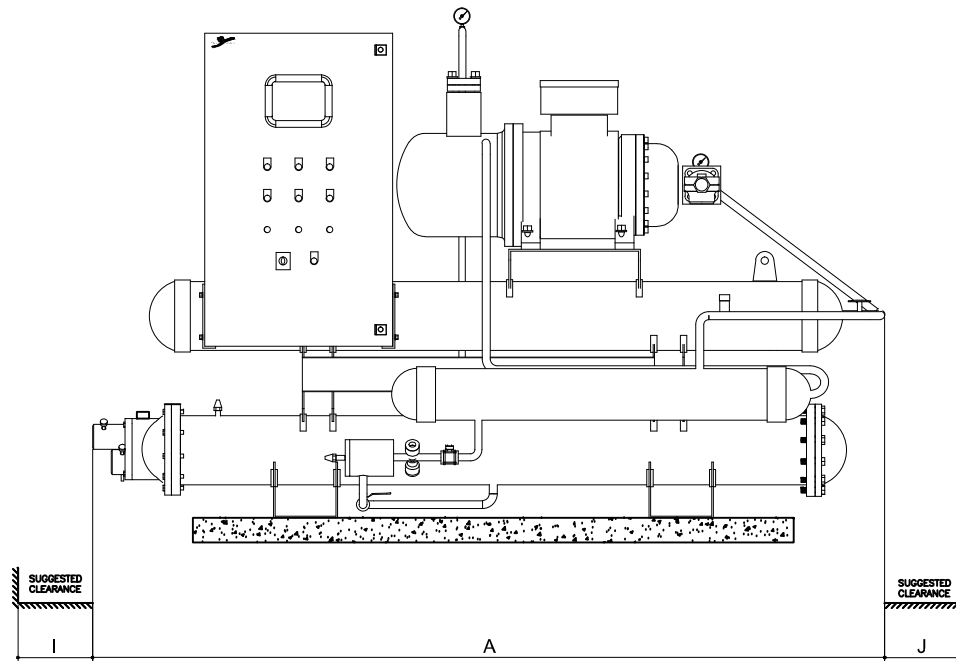
- 13). OIL COOLER 1
- 14). OIL COOLER 2
- 15). CT WATER OUTLET
- 16). CT WATER INLET
- 17). CHILLED WATER/BRINE INLET
- 18). CHILLED WATER/BRINE OUTLET
- 19). FLOW SWITCH
- 20). CONDENSER 1
- 21). CONDENSER 2
- 22). EVAOPORATOR

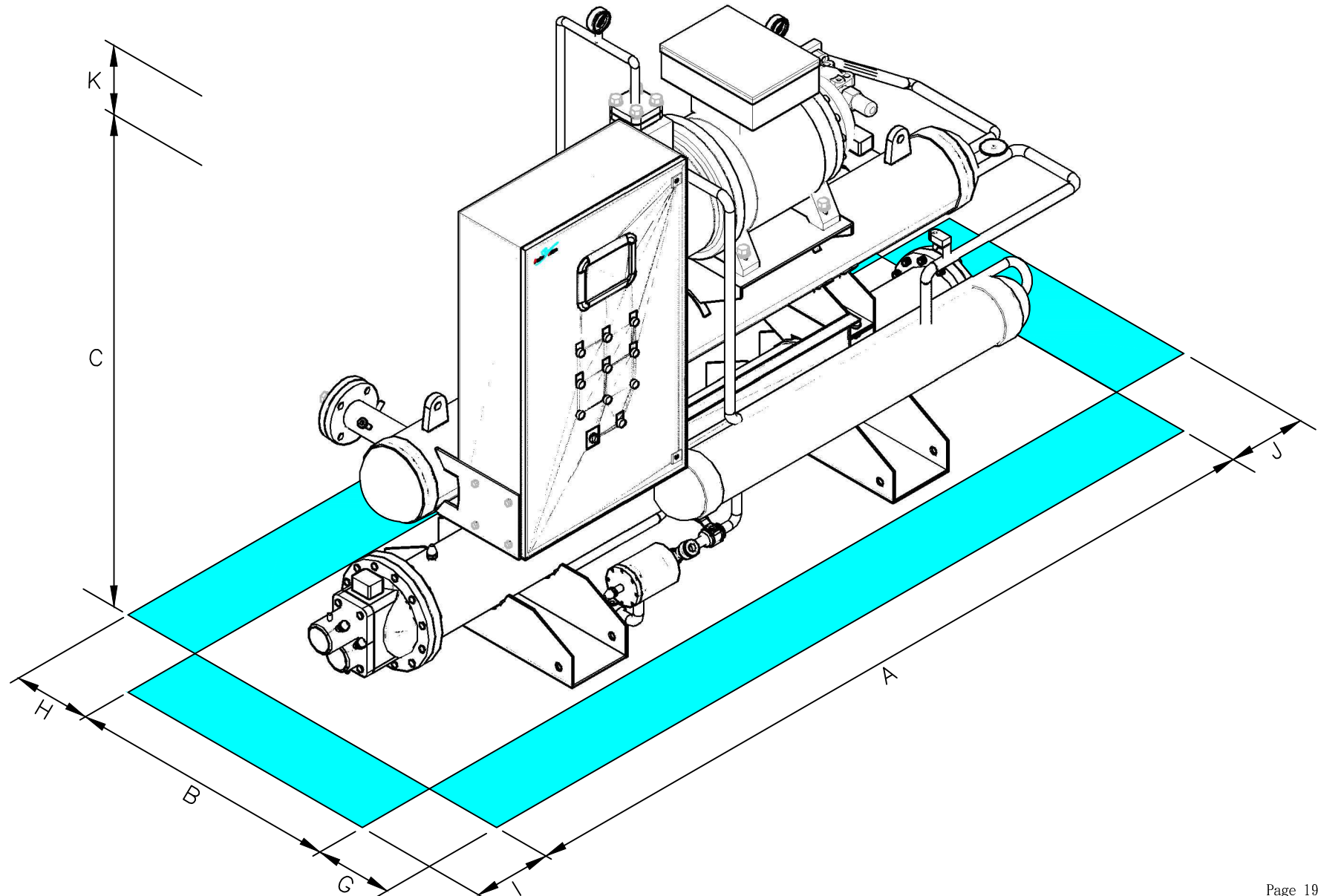




dimensions & clearance											
MODEL	A	B	C	D	E	F	G	H	I	J	K
AWCR-01-HB,BWCR-01-HB	2760	860	1700	190	300	680	1000	1000	1000	2260	300
AWCR-02-HB,BWCR-02-HB	2760	860	1700	190	300	745	1000	1000	1000	2260	300
AWCR-03-HB,BWCR-03-HB	2760	860	1800	240	350	800	1000	1000	1000	2260	300
AWCR-04-HB,BWCR-04-HB	3050	950	1950	240	350	830	1000	1000	1000	2550	300
AWCR-05-HB,BWCR-05-HB	3050	1010	2050	290	400	830	1000	1000	1000	2550	300
AWCR-06-HB,BWCR-06-HB	3050	1010	2050	290	400	830	1000	1000	1000	2550	300
AWCR-07-HB,BWCR-07-HB	3840	1020	2180	290	400	830	1000	1000	1000	3340	300
AWCR-08-HB,BWCR-08-HB	3840	1020	2180	340	450	880	1000	1000	1000	3340	300

Nomenclature			
A	End to End Length	G	Suggested Clearance
B	End to End Width	H	Suggested Clearance
C	End to End Height	I	Suggested Clearance
D	CT Water Inlet Flange Center Distance from Base	J	Suggested Clearance
E	CT Water Outlet Flange Center Distance from Base	K	Suggested Clearance
F	Chilled Water Inlet/Outlet Center Distance from Base		

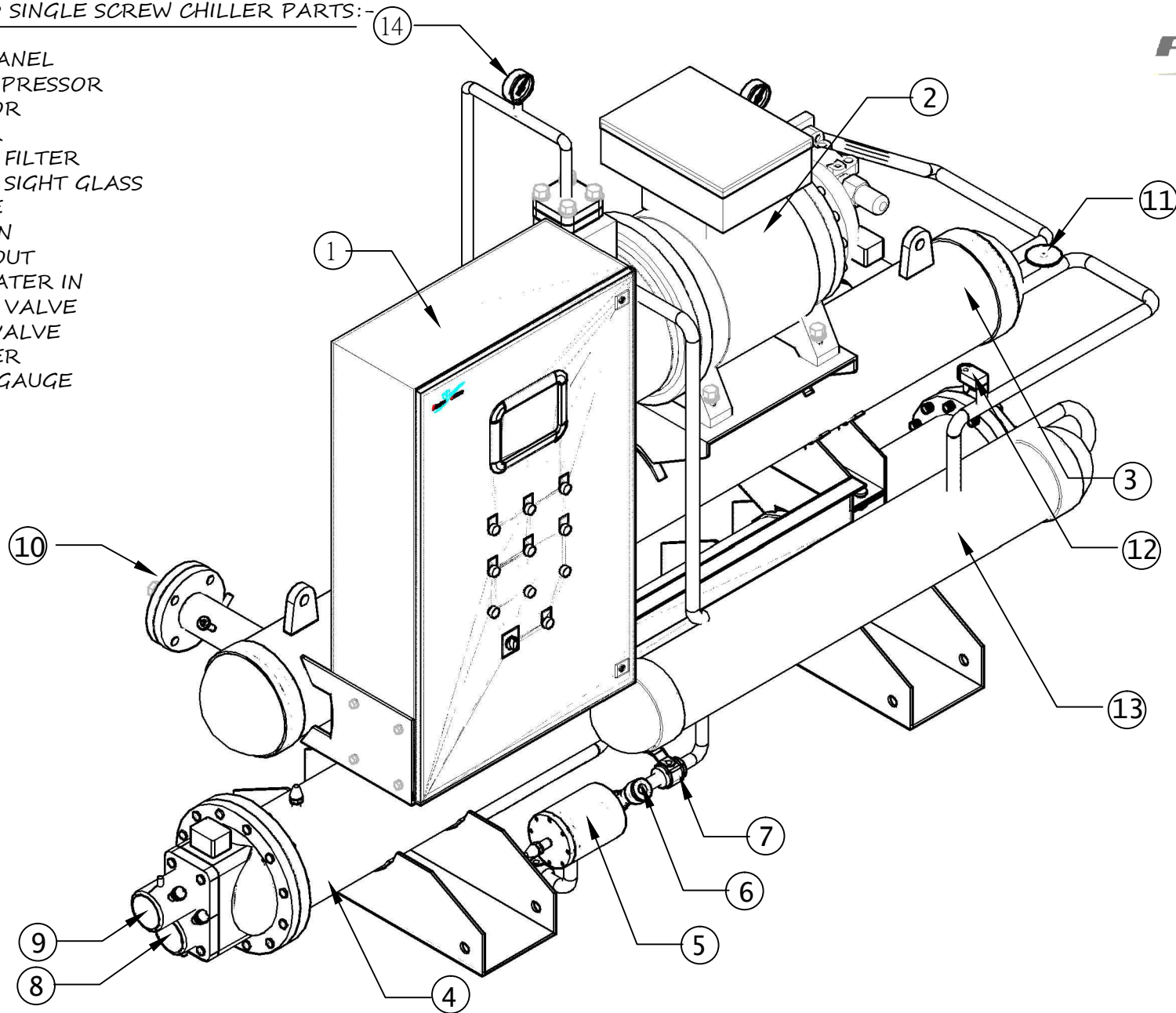




WATER COOLED SINGLE SCREW CHILLER PARTS:-

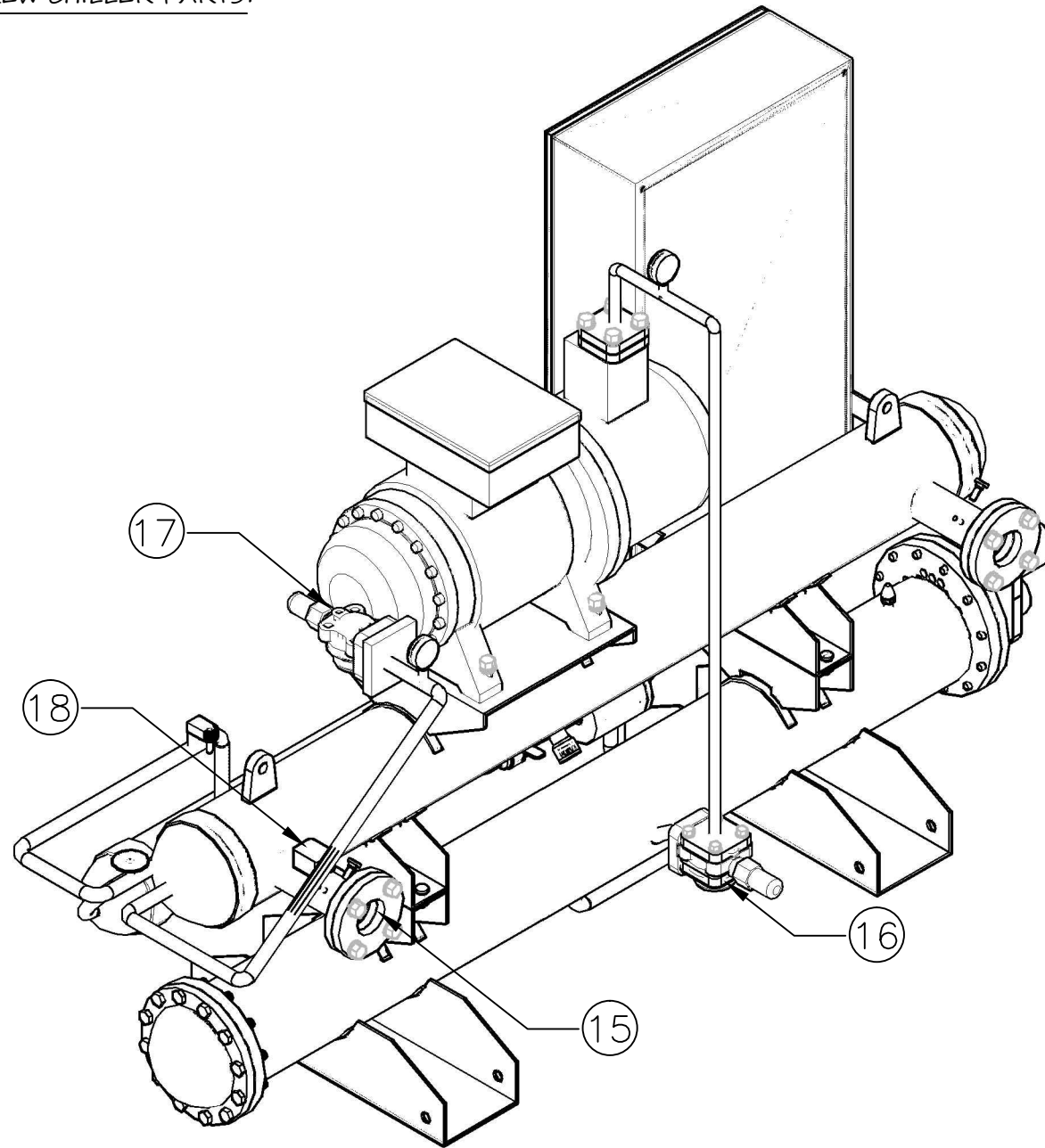


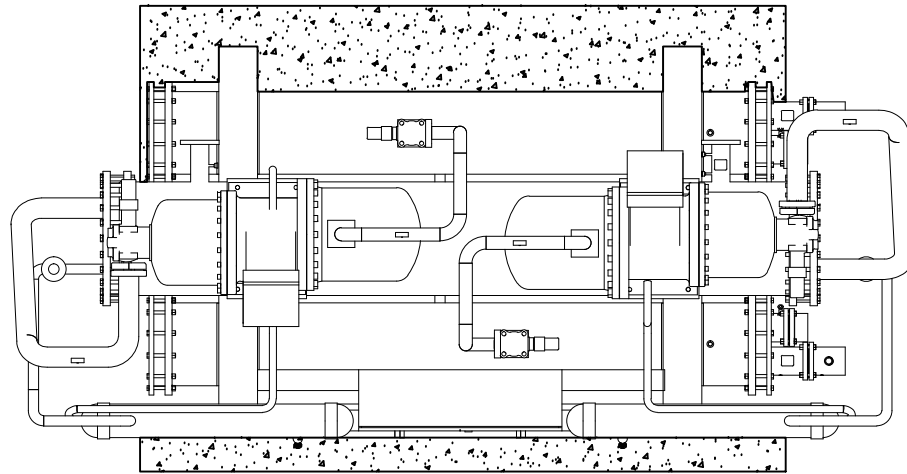
- 1). CONTROL PANEL
- 2). SCREW COMPRESSOR
- 3). EVAPORATOR
- 4). CONDENSER
- 5). LIQUID LINE FILTER
- 6). LIQUID LINE SIGHT GLASS
- 7). BALL VALVE
- 8). CT WATER IN
- 9). CT WATER OUT
- 10). CHILLED WATER IN
- 11). EXPANSION VALVE
- 12). SOLENOID VALVE
- 13). ECONOMIZER
- 14). PRESSURE GAUGE



WATER COOLED SINGLE SCREW CHILLER PARTS:-

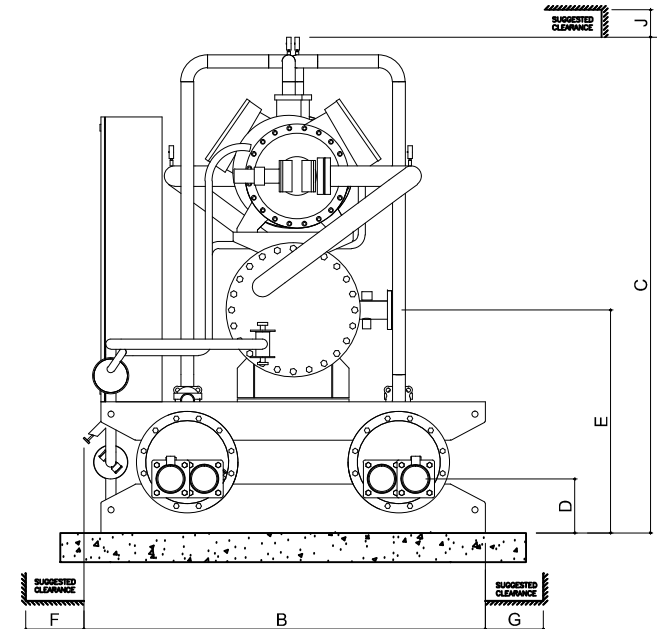
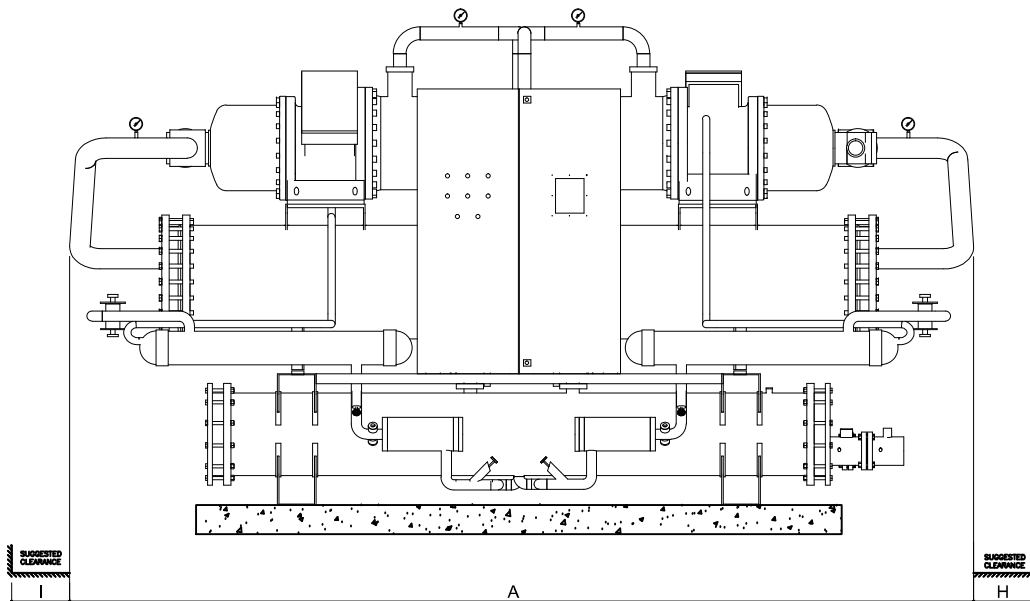
- 15). CHILLED WATER OUT
- 16). DISCHARGE VALVE
- 17). SUCTION VALVE
- 18). FLOW SWITCH

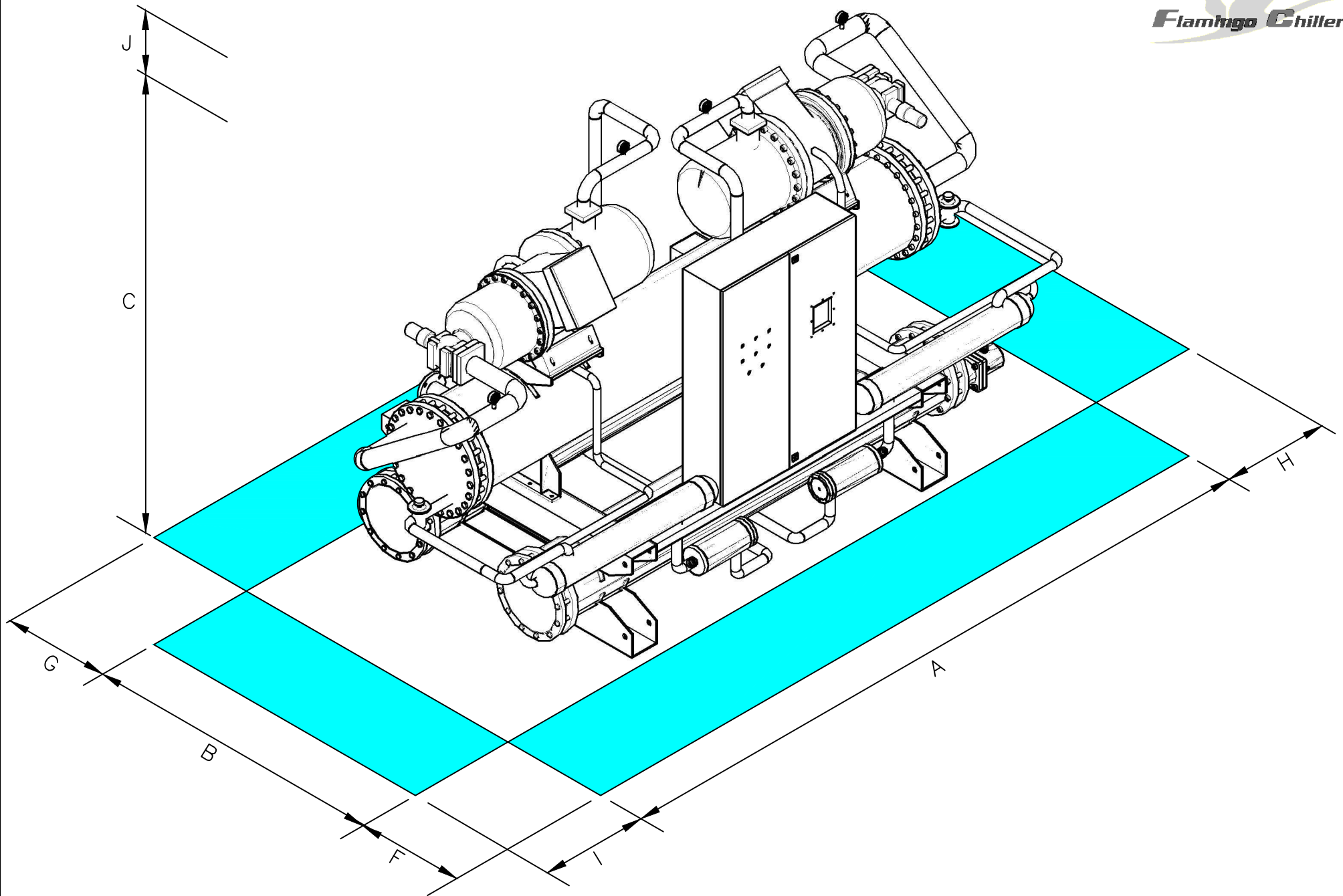




dimensions & clearance										
MODEL	A	B	C	D	E	F	G	H	I	J
AWCR-09-2HB,BWCR-09-2HB	3822	1574	1900	215	1046	1000	1000	1000	2000	300
AWCR-10-2HB,BWCR-10-2HB	3822	1674	2100	215	1046	1000	1000	1000	2000	300
AWCR-11-2HB,BWCR-11-2HB	3822	1674	2100	215	1046	1000	1000	1000	2000	300
AWCR-12-2HB,BWCR-12-2HB	4446	1974	2338	240	1046	1000	1000	1000	3000	300
AWCR-13-2HB,BWCR-13-2HB	4446	1974	2438	265	1096	1000	1000	1000	3000	300

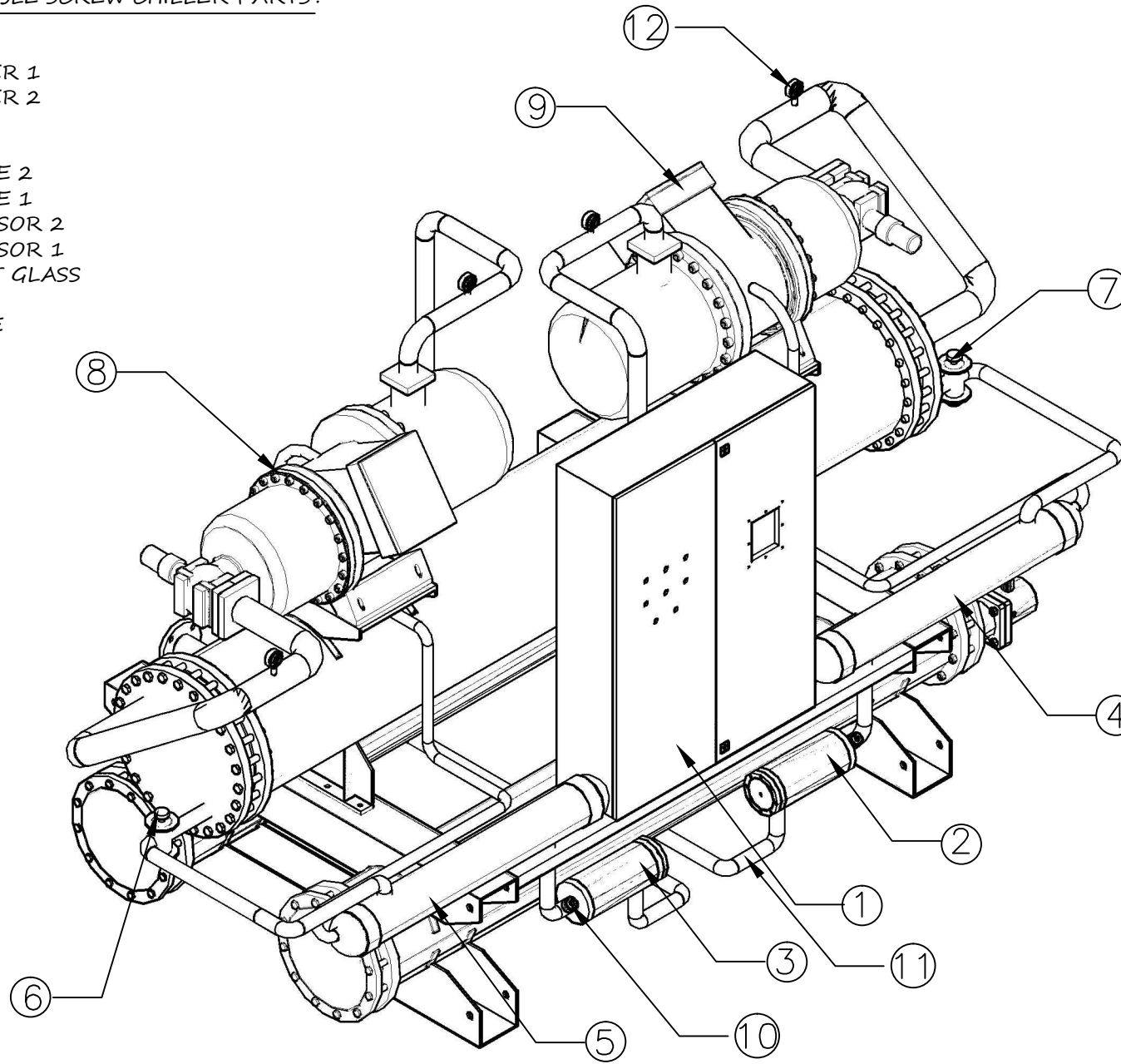
Nomenclature		
A	End to End Length	F Suggested Clearance
B	End to End Width	G Suggested Clearance
C	End to End Height	H Suggested Clearance
D	CT Water Inlet/Outlet Flange Center Distance from Base	I Suggested Clearance
E	Chilled Water/Brine Inlet/Outlet Center Distance from Base	J Suggested Clearance





WATER COOLED DOUBLE SCREW CHILLER PARTS :-

- 1). CONTROL PANEL
- 2). LIQUID LINE FILTER 1
- 3). LIQUID LINE FILTER 2
- 4). ECONOMIZER 1
- 5). ECONOMIZER 2
- 6). EXPANSION VALVE 2
- 7). EXPANSION VALVE 1
- 8). SCREW COMPRESSOR 2
- 9). SCREW COMPRESSOR 1
- 10). LIQUID LINE SIGHT GLASS
- 11). GLOVE VALVE
- 12). PRESSURE GAUGE



WATER COOLED DOUBLE SCREW CHILLER PARTS :-



- 13). CT WATER OUTLET
- 14). CT WATER INLET
- 15). CHILLED WATER/BRINE OUTLET
- 16). CHILLED WATER/BRINE INLET
- 17). FLOW SWITCH
- 18). CONDENSER 1
- 19). EVAPORATOR
- 20). CONDENSER 2

